

Banyan Market Dashboard



Issue 03, 2026 VOL.No.479

SHANGHAI, FRIDAY, Jan 23, 2026

榜样投资 | BANYAN PARTNERS

1 Industry Performance

Banyan Partners categorizes listed companies into 131 industries, tracking the most relevant 124. Each week, we highlight the 15 best and worst-performing industries.

Industry	YTD (%)	2024 (%)	5-year P/E Quantile	5-year P/B Quantile
Precious Metals	35.81	79.89	71.3	99.9
Advertising	29.64	15.68	96.1	99.7
Rare Metals	26.59	96.19	89.9	88.9
Aerospace & Defense	26.12	146.03	99.5	99.5
Wind Power	23.42	45.65	99.1	61.4
Electronic Chemicals	22.78	49.71	99.7	91.0
Electric Power Transmission & Distribution	19.92	33.64	99.8	98.1
Semiconductors	19.11	45.99	99.3	83.2
Fertilizers & Agricultural Chemicals	18.47	40.98	94.3	71.9
Professional Engineering	17.71	13.63	100.0	56.5
Oil & Gas Equipment & Services	17.67	7.20	54.6	99.1
Chemical Raw Materials	17.58	18.81	94.8	69.7
Digital Media	17.18	-0.63	99.5	63.9
Professional Service	15.66	19.24	46.6	42.4
Renovation Materials	15.61	9.30	100.0	46.6

Industry	YTD (%)	2024 (%)	5-year P/E Quantile	5-year P/B Quantile
Communications Equipment	-0.37	130.60	99.6	99.6
Brokerages	-0.96	2.59	14.3	55.5
Rails & Highways	-1.47	-13.83	55.4	9.3
White Goods	-1.58	-2.86	18.7	14.1
Feed	-2.33	8.74	21.0	27.1
Airports	-2.44	11.73	41.4	81.9
Alcoholic Beverages	-2.75	-13.93	1.8	0.0
Passenger Vehicles	-2.93	-4.34	24.8	3.0
Dairy Beverages	-3.10	1.01	50.0	38.9
Rural Banks	-3.53	5.14	50.5	38.7
City Commercial Banks	-3.69	4.43	44.7	18.7
Insurances	-4.16	26.42	16.9	87.2
Livestock Farming	-5.55	13.45	29.0	7.4
Joint-Stock Commercial Banks	-8.81	5.53	49.1	22.4
State-Owned Banks	-9.22	11.80	88.2	78.6

Source: Banyan Partners



2 Market Sentiment Dashboard

Our Market Sentiment Dashboard tracks the "Main Boards" and the "High Tech Boards". For the Shanghai Stock Exchange and the Shenzhen Stock Exchange there is a separate "Main Board" and "High Tech Board". Our "Main Boards" consist of the Shanghai and Shenzhen main boards. Our "High Tech Boards" consist of the Shanghai "STAR Market" and the Shenzhen "ChiNext Market". We measure the sentiment of the respective boards based on the performance of individual stocks and their industries. A score between 0 and 40 indicates bearish market sentiment, between 40 and 60 indicates neutral sentiment, and between 60 and 100 indicates bullish sentiment.



Source: Banyan Partners

3 Unusual Volume Change

Last Friday, Jan 23, 2026, there were 113 stocks with an unusually high change in volume. These 113 stocks were spread across 48 sectors, 12 in Commodity Chemicals, 11 in Semiconductors, 11 in Electric Power Transmission & Distribution, 8 in Industrial Machinery, 7 in Automotive Parts.

Top 20 Stocks with unusual volume change in multiples

Ticker	Name	Industry	Volume Change (x)
920471.bj	美邦科技	Commodity Chemicals	12.7
920014.bj	特瑞斯	Gas Utilities	9.5
920455.bj	汇隆活塞	Speciality Equipment	8.5
300279.sz	和晶科技	Appliance Parts	8.3
600841.sh	动力新科	Automotive Parts	8.1
601096.sh	宏盛华源	Professional Engineering	7.5
920427.bj	华维设计	Engineering Consulting Services	7.5
601616.sh	广电电气	Electric Power Transmission & Distribution	7.4
600774.sh	汉商集团	Pharmaceuticals	7.4
300758.sz	七彩化学	Commodity Chemicals	7.4
002809.sz	红墙股份	Commodity Chemicals	7.2
002165.sz	红宝丽	Commodity Chemicals	6.8
003035.sz	南网能源	Electric Utilities	6.6
603559.sh	ST通脉	Telecommunication Carriers	6.4
688610.sh	埃科光电	Industrial Machinery	6.4
600649.sh	城投控股	Real Estate Development	6.2
300606.sz	金太阳	Industrial Machinery	6.1
002498.sz	汉缆股份	Electric Power Transmission & Distribution	6.0
301348.sz	蓝箭电子	Semiconductors	5.9
601163.sh	三角轮胎	Automotive Parts	5.8

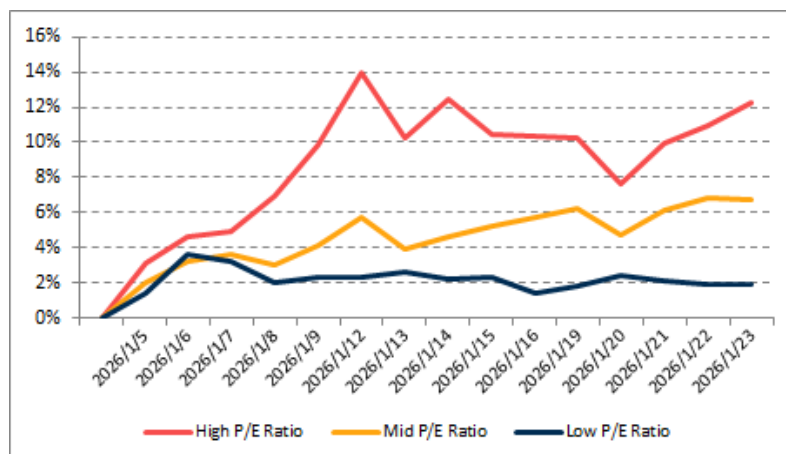
Source: Banyan Partners



4 Investment Style Performance

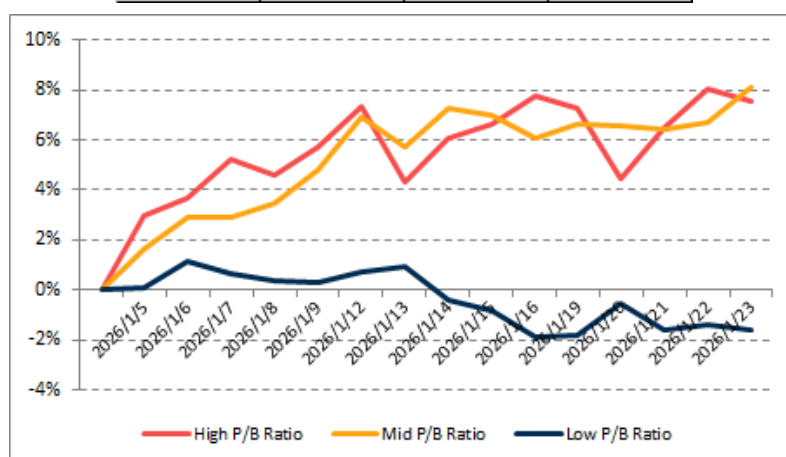
The performance of the investment style is assessed by using two metrics: P/E ratio and P/B ratio. For each metric, we categorize the data into three groups: high, mid, and low.

PE	High P/E Ratio	Mid P/E Ratio	Low P/E Ratio
YTD	12.3%	6.8%	1.9%



Source: Banyan Partners

PB	High P/B Ratio	Mid P/B Ratio	Low P/B Ratio
YTD	7.5%	8.1%	-1.6%



Source: Banyan Partners

Disclaimer

This material is provided for information purposes only and is not intended as an offer or solicitation for the purchases or sale of any financial instrument. Information has been obtained from sources believed to be reliable, but Banyan Partners or its affiliates, does not warrant as to its completeness or accuracy. Opinions and estimates constitute the judgment of Banyan Partners as of the date of this material and are subject to change without notice. Past performance is not indicative of future results. This document was last updated Jan 23 2025.

