

# Banyan Market Dashboard



Issue 11, 2026 VOL.No.487

SHANGHAI, FRIDAY, Mar 27, 2026

榜样投资 | BANYAN PARTNERS

## 1 Industry Performance

Banyan Partners categorizes listed companies into 131 industries, tracking the most relevant 124. Each week, we highlight the 15 best and worst-performing industries.

Industry	YTD (%)	2024 (%)	5-year P/E Quantile	5-year P/B Quantile
Oil & Gas Equipment & Services	40.31	7.20	61.3	98.3
Fiberglass	23.84	58.66	98.3	72.7
Coal Mining	22.09	-6.30	99.8	88.3
Chemical Raw Materials	21.69	18.81	96.8	72.2
Electric Power Transmission & Distribut	21.06	33.64	98.2	96.3
Precious Metals	19.90	79.89	47.7	96.2
Wind Power	19.22	45.65	98.2	68.3
Rare Metals	19.01	96.19	87.1	85.6
Non-Metallic Materials	17.93	26.76	86.8	46.9
Fertilizers & Agricultural Chemicals	17.11	40.98	91.1	63.9
Marine Ports	16.41	5.08	92.1	78.1
Electric Utilities	15.45	-0.35	59.1	94.7
Professional Engineering	15.00	13.63	96.9	56.1
Electronic Chemicals	14.99	49.71	95.2	85.5
Miscellaneous	13.80	43.56	91.5	95.1

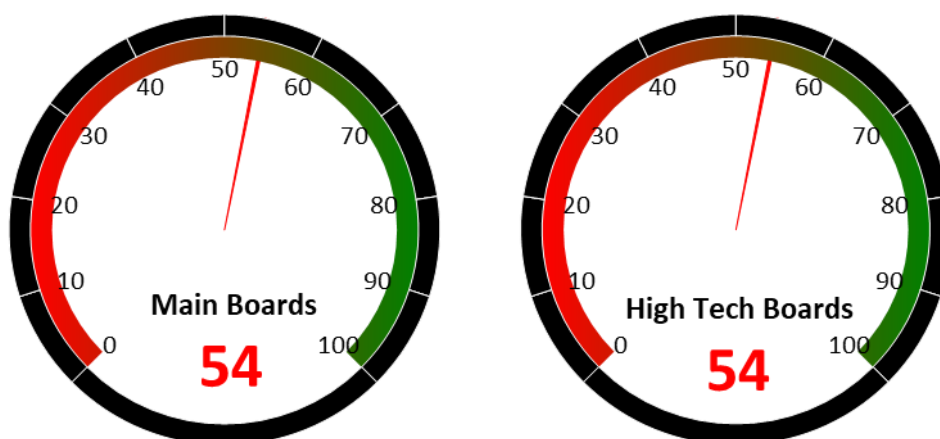
Industry	YTD (%)	2024 (%)	5-year P/E Quantile	5-year P/B Quantile
Education	-8.87	6.69	37.8	67.5
Chain Stores	-9.08	-13.59	89.1	56.5
Dairy Beverages	-9.18	1.01	41.3	16.6
Motorcycle & Others	-9.30	42.62	14.4	65.4
Software	-9.54	17.23	63.1	47.1
Aerospace & Defense	-9.64	146.03	95.8	95.8
Consumer Electronics	-9.72	48.87	80.3	70.1
Movies & Entertainment	-10.54	16.13	24.3	68.5
Appliance Parts	-10.80	88.96	74.3	59.3
Small Household Appliances	-12.46	8.85	32.0	1.5
Electric Machinery	-13.76	70.78	80.4	71.5
Brokerages	-14.28	2.59	0.8	22.8
General Retail	-15.00	3.03	90.8	76.3
Insurances	-15.78	26.42	2.8	53.8
Airports	-21.62	11.73	21.3	21.8

Source: Banyan Partners



## 2 Market Sentiment Dashboard

Our Market Sentiment Dashboard tracks the "Main Boards" and the "High Tech Boards". For the Shanghai Stock Exchange and the Shenzhen Stock Exchange there is a separate "Main Board" and "High Tech Board". Our "Main Boards" consist of the Shanghai and Shenzhen main boards. Our "High Tech Boards" consist of the Shanghai "STAR Market" and the Shenzhen "ChiNext Market". We measure the sentiment of the respective boards based on the performance of individual stocks and their industries. A score between 0 and 40 indicates bearish market sentiment, between 40 and 60 indicates neutral sentiment, and between 60 and 100 indicates bullish sentiment.



Source: Banyan Partners

## 3 Unusual Volume Change

Last Friday, Mar 27, 2026, there were 63 stocks with an unusually high change in volume. These 63 stocks were spread across 24 sectors, 26 in Electric Utilities, 5 in Battery Manufacturing, 3 in Optoelectronics, 3 in Motorcycle & Others.

Top 20 Stocks with unusual volume change in multiples

Ticker	Name	Industry	Volume Change (x)
600982.sh	宁波能源	Electric Utilities	8.5
600032.sh	浙江新能	Electric Utilities	7.4
603687.sh	大胜达	Packaging & Printing	7.2
000539.sz	粤电力A	Electric Utilities	7.1
603787.sh	新日股份	Motorcycle & Others	7.0
603529.sh	爱玛科技	Motorcycle & Others	6.4
000020.sz	深华发A	Optoelectronics	6.4
600758.sh	辽宁能源	Coal Mining	5.9
600310.sh	广西能源	Electric Utilities	5.9
600780.sh	通宝能源	Electric Utilities	5.8
002580.sz	圣阳股份	Battery Manufacturing	5.7
002310.sz	东方新能	Infrastructure Construction	5.7
002893.sz	京能热力	Electric Utilities	5.2
000601.sz	韶能股份	Electric Utilities	5.1
001256.sz	炜冈科技	Speciality Equipment	5.1
601330.sh	绿色动力	Environmental Governance	5.0
000966.sz	长源电力	Electric Utilities	4.9
300868.sz	杰美特	Consumer Electronics	4.8
000531.sz	穗恒运A	Electric Utilities	4.7
600726.sh	华电能源	Electric Utilities	4.7

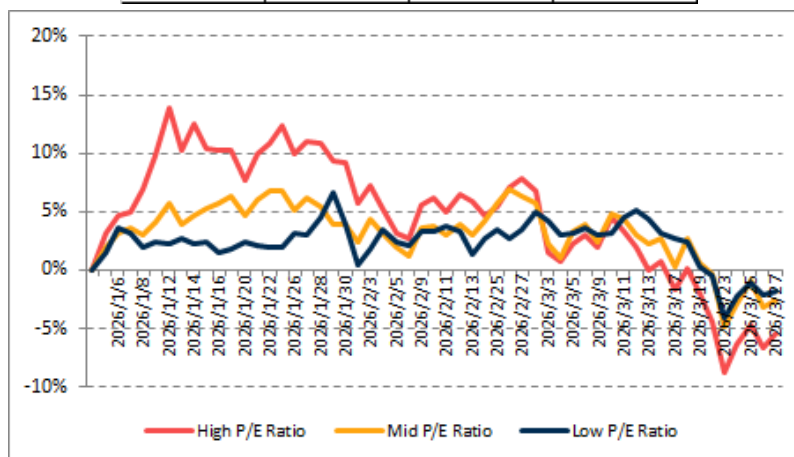
Source: Banyan Partners



## 4 Investment Style Performance

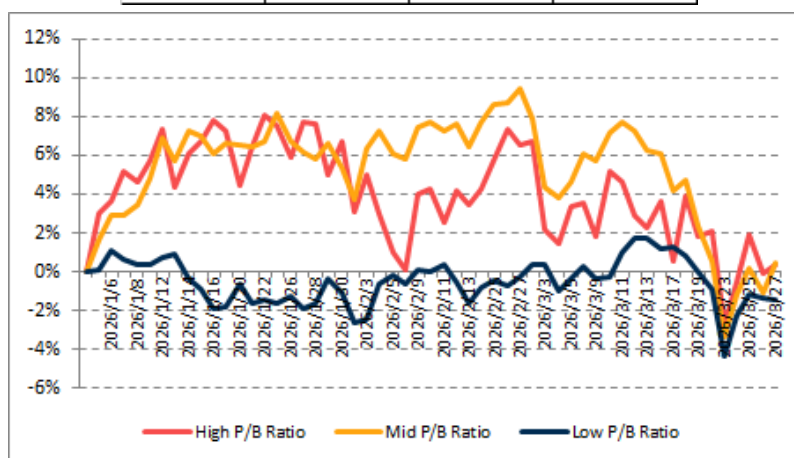
The performance of the investment style is assessed by using two metrics: P/E ratio and P/B ratio. For each metric, we categorize the data into three groups: high, mid, and low.

PE	High P/E Ratio	Mid P/E Ratio	Low P/E Ratio
YTD	-5.4%	-2.6%	-1.9%



Source: Banyan Partners

PB	High P/B Ratio	Mid P/B Ratio	Low P/B Ratio
YTD	0.3%	0.4%	-1.5%



Source: Banyan Partners

### Disclaimer

This material is provided for information purposes only and is not intended as an offer or solicitation for the purchases or sale of any financial instrument. Information has been obtained from sources believed to be reliable, but Banyan Partners or its affiliates, does not warrant as to its completeness or accuracy. Opinions and estimates constitute the judgment of Banyan Partners as of the date of this material and are subject to change without notice. Past performance is not indicative of future results. This document was last updated Mar 27 2025.

