

# Banyan Market Dashboard



Issue 45, 2025 VOL.No.472

SHANGHAI, FRIDAY, Dec 05, 2025

榜样投资 | BANYAN PARTNERS

## 1 Industry Performance

Banyan Partners categorizes listed companies into 131 industries, tracking the most relevant 124. Each week, we highlight the 15 best and worst-performing industries.

Industry	YTD (%)	2024 (%)	5-year P/E Quantile	5-year P/B Quantile
Communications Equipment	108.09	34.06	97.9	99.3
Electronic Components	88.55	29.63	94.5	95.7
Industrial Metals	86.42	12.22	81.7	99.2
Energy Metals	83.85	-21.03	71.1	50.7
Rare Metals	79.12	6.45	75.0	64.3
Precious Metals	73.02	8.55	15.9	93.4
Appliance Parts	65.73	-8.38	69.9	54.5
Weapons & Ammunition	63.72	-4.56	88.1	91.5
Electric Machinery	56.16	1.75	92.2	84.4
Gaming	55.38	-0.23	72.3	90.5
Plastics	54.33	-9.57	93.7	71.7
Battery Manufacturing	51.28	17.57	58.1	45.1
Aerospace & Defense	46.87	7.39	100.0	79.6
Metallic New Materials	45.56	5.90	93.1	81.0
Consumer Electronics	44.83	14.03	89.5	73.7

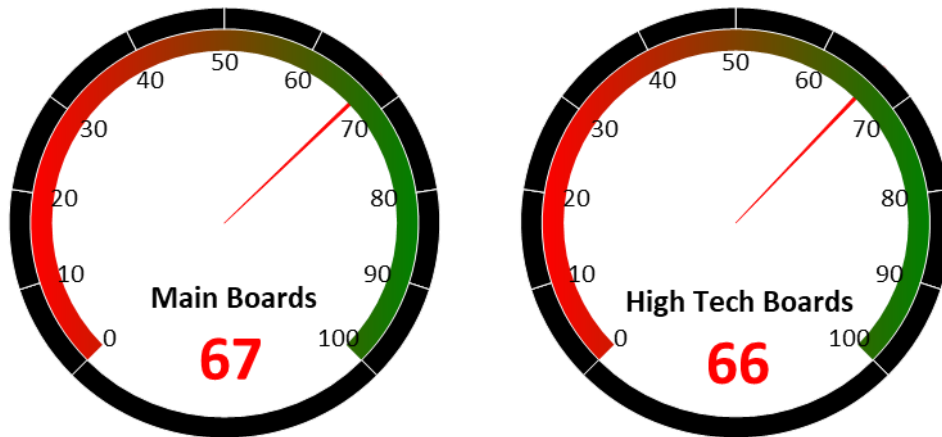
Industry	YTD (%)	2024 (%)	5-year P/E Quantile	5-year P/B Quantile
Hospitality	-0.98	-12.84	32.0	21.8
General Retail	-1.10	29.35	98.3	91.7
Digital Media	-1.35	-0.72	97.1	36.3
Traditional Chinese Medicine	-1.55	-6.63	52.6	18.2
Coal Mining	-1.92	7.10	98.8	48.7
Kitchen & Bathroom Appliances	-2.59	4.72	51.8	14.7
Publishing	-2.98	6.68	84.6	65.1
Rail Transportation	-3.31	23.57	48.8	78.9
Passenger Vehicles	-4.67	30.48	32.1	4.9
Soft drinks & Non-Alcoholic Beverages	-8.02	4.29	6.2	6.8
Condiments	-8.06	3.67	21.1	4.3
Alcoholic Beverages	-9.40	-13.10	12.9	0.8
Homebuilding	-9.98	19.09	92.7	1.6
Rails & Highways	-11.26	19.52	62.8	23.2
Chain Stores	-15.36	51.05	97.5	74.8

Source: Banyan Partners



## 2 Market Sentiment Dashboard

Our Market Sentiment Dashboard tracks the "Main Boards" and the "High Tech Boards". For the Shanghai Stock Exchange and the Shenzhen Stock Exchange there is a separate "Main Board" and "High Tech Board". Our "Main Boards" consist of the Shanghai and Shenzhen main boards. Our "High Tech Boards" consist of the Shanghai "STAR Market" and the Shenzhen "ChiNext Market". We measure the sentiment of the respective boards based on the performance of individual stocks and their industries. A score between 0 and 40 indicates bearish market sentiment, between 40 and 60 indicates neutral sentiment, and between 60 and 100 indicates bullish sentiment.



Source: Banyan Partners

## 3 Unusual Volume Change

Last Friday, Dec 05, 2025, there were 93 stocks with an unusually high change in volume. These 93 stocks were spread across 46 sectors, 6 in Consumer Electronics, 5 in Communications Equipment, 4 in Defense Electronics, 4 in Pharmaceutical Business.

Top 20 Stocks with unusual volume change in multiples

Ticker	Name	Industry	Volume Change (x)
002519.sz	银河电子	Weapons & Ammunition	11.9
603327.sh	福蓉科技	Consumer Electronics	10.9
002983.sz	芯瑞达	Optoelectronics	10.9
000078.sz	海王生物	Pharmaceutical Business	10.1
605108.sh	同庆楼	Hospitality	8.2
920701.bj	豪声电子	Consumer Electronics	7.2
301111.sz	粤万年青	Traditional Chinese Medicine	7.1
600981.sh	苏豪汇鸿	Retail Products Trading	7.1
603999.sh	读者传媒	Publishing	6.9
600828.sh	茂业商业	General Retail	6.9
600151.sh	航天机电	Solar Power	6.7
000812.sz	陕西金叶	Packaging & Printing	6.4
002686.sz	亿利达	Industrial Machinery	6.4
002413.sz	雷科防务	Defense Electronics	6.3
600734.sh	实达集团	Communications Equipment	6.2
600573.sh	惠泉啤酒	Soft drinks & Non-Alcoholic Beverages	5.9
301510.sz	固高科技	Automation Equipment	5.8
002566.sz	益盛药业	Traditional Chinese Medicine	5.8
003018.sz	金富科技	Packaging & Printing	5.7
301567.sz	贝隆精密	Consumer Electronics	5.5

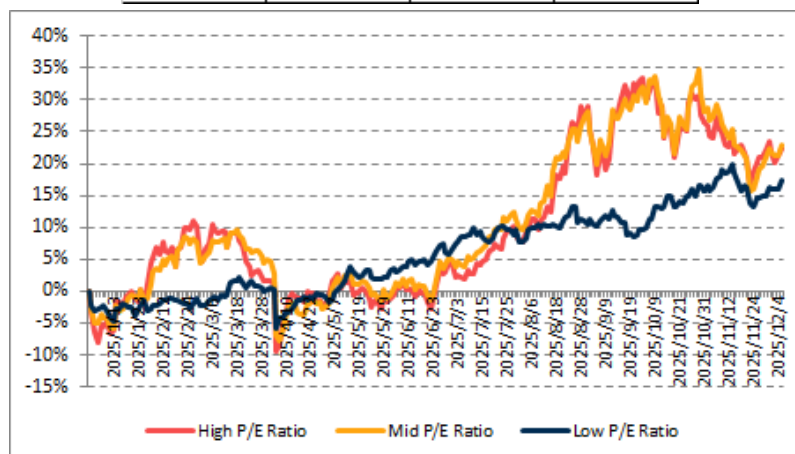
Source: Banyan Partners



## 4 Investment Style Performance

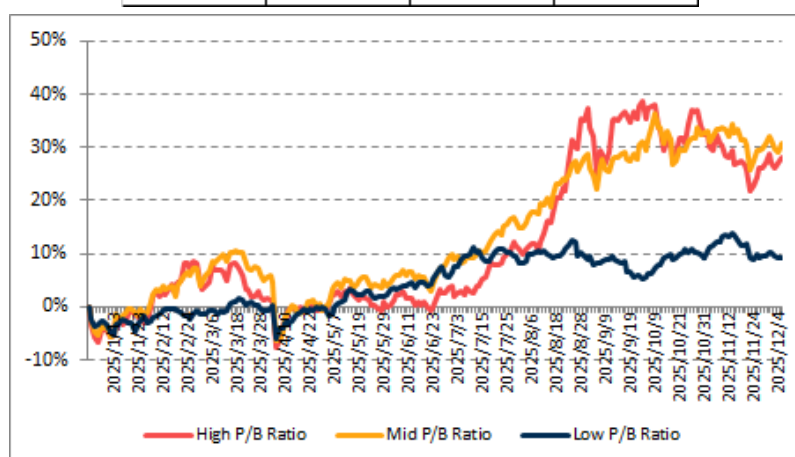
The performance of the investment style is assessed by using two metrics: P/E ratio and P/B ratio. For each metric, we categorize the data into three groups: high, mid, and low.

PE	High P/E Ratio	Mid P/E Ratio	Low P/E Ratio
YTD	22.5%	22.9%	17.5%



Source: Banyan Partners

PB	High P/B Ratio	Mid P/B Ratio	Low P/B Ratio
YTD	28.2%	30.6%	9.4%



Source: Banyan Partners

### Disclaimer

This material is provided for information purposes only and is not intended as an offer or solicitation for the purchases or sale of any financial instrument. Information has been obtained from sources believed to be reliable, but Banyan Partners or its affiliates, does not warrant as to its completeness or accuracy. Opinions and estimates constitute the judgment of Banyan Partners as of the date of this material and are subject to change without notice. Past performance is not indicative of future results. This document was last updated Dec 05 2025.

