

# Banyan Market Dashboard



Issue 19, 2026 VOL.No.495

SHANGHAI, FRIDAY, May 22, 2026

榜样投资 | BANYAN PARTNERS

## 1 Industry Performance

Banyan Partners categorizes listed companies into 131 industries, tracking the most relevant 124. Each week, we highlight the 15 best and worst-performing industries.

Industry	YTD (%)	2024 (%)	5-year P/E Quantile	5-year P/B Quantile
Fiberglass	87.31	58.66	99.5	87.1
Electronic Components	71.04	105.54	99.6	99.7
Electronic Chemicals	63.08	49.71	99.7	97.9
Non-Metallic Materials	62.14	26.76	95.1	58.6
Communications Equipment	56.10	130.60	98.3	99.2
Semiconductors	53.05	45.99	95.5	91.6
Automation Equipment	49.27	33.57	99.8	93.7
Environmental Protection Equipment	34.36	25.14	96.8	99.0
Lighting Equipments	34.08	12.58	99.1	83.1
Rare Metals	31.06	96.19	82.1	85.1
Other Power Equipment	26.96	42.94	95.0	86.1
Other Electronics	26.58	49.23	84.4	97.5
Miscellaneous	25.58	43.56	99.0	97.8
Electric Power Transmission & Distribut	25.48	33.64	95.1	94.0
Optoelectronics	25.04	10.72	82.6	99.7

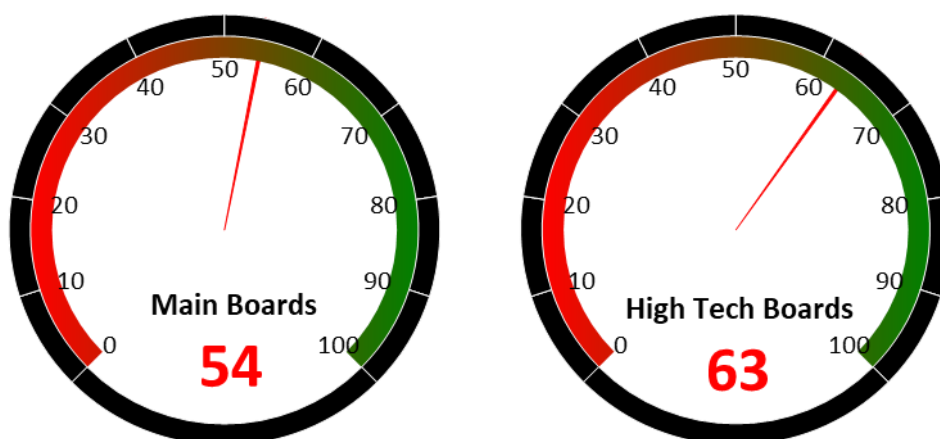
Industry	YTD (%)	2024 (%)	5-year P/E Quantile	5-year P/B Quantile
Fishery	-12.77	12.43	81.4	91.9
Joint-Stock Commercial Banks	-13.04	5.53	43.7	7.3
Alcoholic Beverages	-13.26	-13.93	34.1	0.0
Gaming	-13.32	60.50	31.5	76.1
Brokerages	-14.58	2.59	0.9	14.4
Passenger Vehicles	-14.80	-4.34	55.5	0.2
Livestock Farming	-16.26	13.45	52.9	1.0
Hospitality	-16.97	-0.31	7.5	2.1
Feed	-17.20	8.74	41.2	5.1
Tourism	-18.62	8.16	22.6	21.3
Personal Care	-18.72	16.28	49.0	10.3
General Retail	-19.24	3.03	76.4	73.4
Education	-20.37	6.69	66.2	64.5
Insurances	-21.63	26.42	1.2	25.9
Airports	-25.09	11.73	0.3	17.0

Source: Banyan Partners



## 2 Market Sentiment Dashboard

Our Market Sentiment Dashboard tracks the "Main Boards" and the "High Tech Boards". For the Shanghai Stock Exchange and the Shenzhen Stock Exchange there is a separate "Main Board" and "High Tech Board". Our "Main Boards" consist of the Shanghai and Shenzhen main boards. Our "High Tech Boards" consist of the Shanghai "STAR Market" and the Shenzhen "ChiNext Market". We measure the sentiment of the respective boards based on the performance of individual stocks and their industries. A score between 0 and 40 indicates bearish market sentiment, between 40 and 60 indicates neutral sentiment, and between 60 and 100 indicates bullish sentiment.



Source: Banyan Partners

## 3 Unusual Volume Change

Last Friday, May 22, 2026, there were 100 stocks with an unusually high change in volume. These 100 stocks were spread across 47 sectors, 6 in Industrial Machinery, 6 in Semiconductors, 6 in IT Services, 6 in Electric Machinery, 5 in Automotive Parts, 5 in Speciality Equipment

Top 20 Stocks with unusual volume change in multiples

Ticker	Name	Industry	Volume Change (x)
920718.bj	合肥高科	Appliance Parts	13.6
603082.sh	北自科技	Automation Equipment	9.9
688360.sh	德马科技	Industrial Machinery	7.6
688507.sh	索辰科技	Software	7.5
000417.sz	合百集团	General Retail	7.4
002421.sz	达实智能	IT Services	7.4
301020.sz	密封科技	Automotive Parts	7.4
600578.sh	京能电力	Electric Utilities	6.6
603206.sh	嘉环科技	Telecommunication Carriers	6.6
000518.sz	*ST四环	Biological Products	6.5
603767.sh	中马传动	Automotive Parts	6.4
300276.sz	三丰智能	Automation Equipment	6.3
300537.sz	广信材料	Electronic Chemicals	6.3
600909.sh	华安证券	Brokerages	5.9
603677.sh	奇精机械	Appliance Parts	5.9
300259.sz	新天科技	Industrial Machinery	5.9
603779.sh	威龙股份	Soft drinks & Non-Alcoholic Beverages	5.9
301139.sz	元道通信	Telecommunication Carriers	5.8
301313.sz	凡拓数创	Digital Media	5.7
920699.bj	海达尔	Appliance Parts	5.7

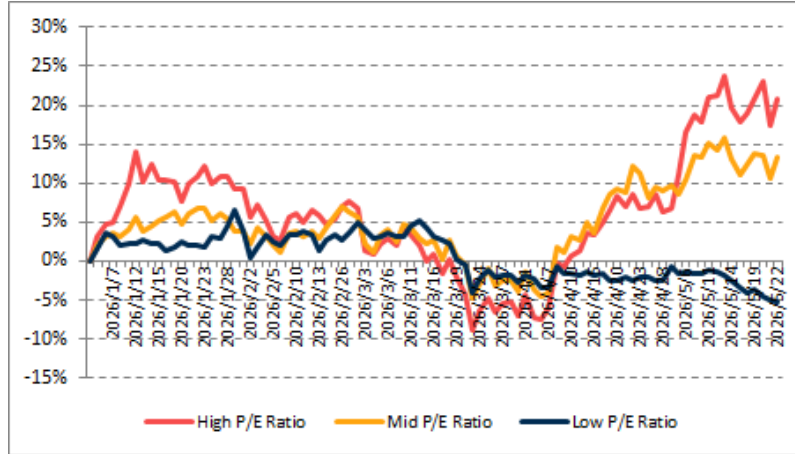
Source: Banyan Partners



## 4 Investment Style Performance

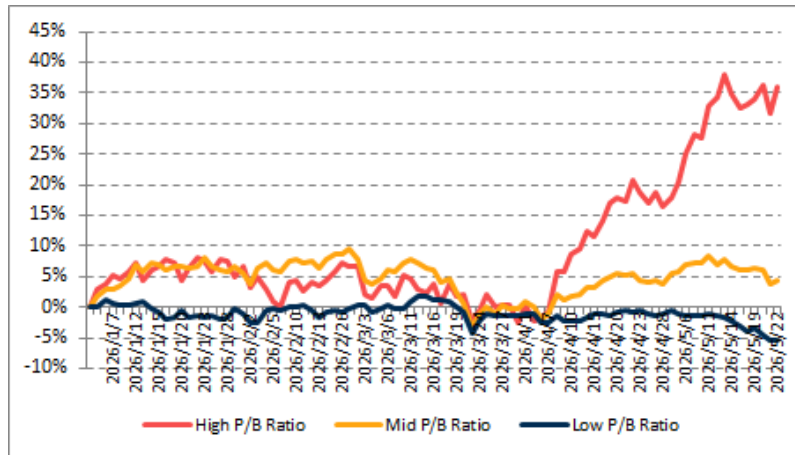
The performance of the investment style is assessed by using two metrics: P/E ratio and P/B ratio. For each metric, we categorize the data into three groups: high, mid, and low.

PE	High P/E Ratio	Mid P/E Ratio	Low P/E Ratio
YTD	20.9%	13.3%	-5.3%



Source: Banyan Partners

PB	High P/B Ratio	Mid P/B Ratio	Low P/B Ratio
YTD	36.0%	4.2%	-5.4%



Source: Banyan Partners

### Disclaimer

This material is provided for information purposes only and is not intended as an offer or solicitation for the purchases or sale of any financial instrument. Information has been obtained from sources believed to be reliable, but Banyan Partners or its affiliates, does not warrant as to its completeness or accuracy. Opinions and estimates constitute the judgment of Banyan Partners as of the date of this material and are subject to change without notice. Past performance is not indicative of future results. This document was last updated May 22 2025.

