

# Banyan Market Dashboard



Issue 43, 2025 VOL.No.470

SHANGHAI, FRIDAY, Nov 21, 2025

榜样投资 | BANYAN PARTNERS

## 1 Industry Performance

Banyan Partners categorizes listed companies into 131 industries, tracking the most relevant 124. Each week, we highlight the 15 best and worst-performing industries.

Industry	YTD (%)	2024 (%)	5-year P/E Quantile	5-year P/B Quantile
Energy Metals	83.18	-21.03	72.4	52.6
Communications Equipment	78.97	34.06	95.7	96.5
Electronic Components	75.60	29.63	94.5	96.0
Rare Metals	67.76	6.45	75.5	66.8
Industrial Metals	65.10	12.22	75.1	97.6
Precious Metals	64.35	8.55	18.0	94.7
Weapons & Ammunition	63.04	-4.56	90.2	93.6
Appliance Parts	55.33	-8.38	62.2	46.2
Electric Machinery	51.76	1.75	92.5	84.6
Gaming	51.53	-0.23	71.8	90.6
Plastics	47.19	-9.57	94.5	72.8
Battery Manufacturing	46.50	17.57	58.2	48.2
Metallurgical Materials	41.25	-9.16	100.0	73.5
Miscellaneous	37.19	3.22	59.0	86.4
Veterinary	36.27	-28.67	66.3	37.3

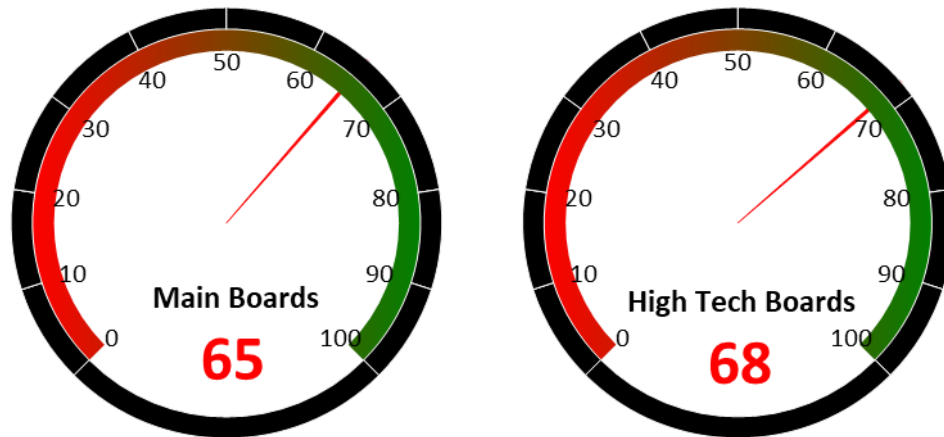
Industry	YTD (%)	2024 (%)	5-year P/E Quantile	5-year P/B Quantile
Publishing	-1.64	6.68	86.6	73.1
Kitchen & Bathroom Appliances	-1.86	4.72	59.0	23.7
White Goods	-1.87	39.09	22.4	16.4
Coal Mining	-2.38	7.10	98.9	53.9
Traditional Chinese Medicine	-2.83	-6.63	55.0	21.0
Rail Transportation	-3.52	23.57	60.2	86.9
General Retail	-3.98	29.35	98.9	93.4
Hospitality	-4.85	-12.84	31.1	17.1
Alcoholic Beverages	-6.30	-13.10	20.1	4.0
Passenger Vehicles	-7.29	30.48	30.5	3.7
Soft drinks & Non-Alcoholic Beverages	-7.57	4.29	8.6	9.2
Condiments	-8.77	3.67	24.3	5.9
Homebuilding	-10.90	19.09	97.7	1.8
Rails & Highways	-12.91	19.52	62.2	22.4
Chain Stores	-17.86	51.05	97.2	71.6

Source: Banyan Partners



## 2 Market Sentiment Dashboard

Our Market Sentiment Dashboard tracks the "Main Boards" and the "High Tech Boards". For the Shanghai Stock Exchange and the Shenzhen Stock Exchange there is a separate "Main Board" and "High Tech Board". Our "Main Boards" consist of the Shanghai and Shenzhen main boards. Our "High Tech Boards" consist of the Shanghai "STAR Market" and the Shenzhen "ChiNext Market". We measure the sentiment of the respective boards based on the performance of individual stocks and their industries. A score between 0 and 40 indicates bearish market sentiment, between 40 and 60 indicates neutral sentiment, and between 60 and 100 indicates bullish sentiment.



Source: Banyan Partners

## 3 Unusual Volume Change

Last Friday, Nov 21, 2025, there were 113 stocks with an unusually high change in volume. These 113 stocks were spread across 51 sectors, 6 in Commodity Chemicals, 6 in Fishery, 5 in Pharmaceutical Business, 5 in IT Services, 5 in Plastics, 4 in Environmental Governance.

Top 20 Stocks with unusual volume change in multiples

Ticker	Name	Industry	Volume Change (x)
300612.sz	宣亚国际	Advertising	9.9
300094.sz	国联水产	Fishery	9.7
002242.sz	九阳股份	Small Household Appliances	8.3
002069.sz	獐子岛	Fishery	8.3
000566.sz	海南海药	Pharmaceuticals	8.3
000547.sz	航天发展	Defense Electronics	7.7
300538.sz	同益股份	Plastics	7.5
603877.sh	太平鸟	Clothings	7.4
600097.sh	开创国际	Fishery	7.4
000798.sz	中水渔业	Fishery	7.3
002404.sz	嘉欣丝绸	Clothings	7.0
000633.sz	合金投资	Metallic New Materials	7.0
300078.sz	思创医惠	IT Services	6.9
605339.sh	南侨食品	Snack Food Packaging	6.9
002086.sz	东方海洋	Medical Devices	6.8
300427.sz	红相股份	Electric Power Transmission & Distribution	6.8
002301.sz	齐心集团	Stationery Products	6.6
601566.sh	九牧王	Clothings	6.4
300560.sz	中富通	Telecommunication Carriers	6.4
301507.sz	民生健康	Pharmaceuticals	6.3

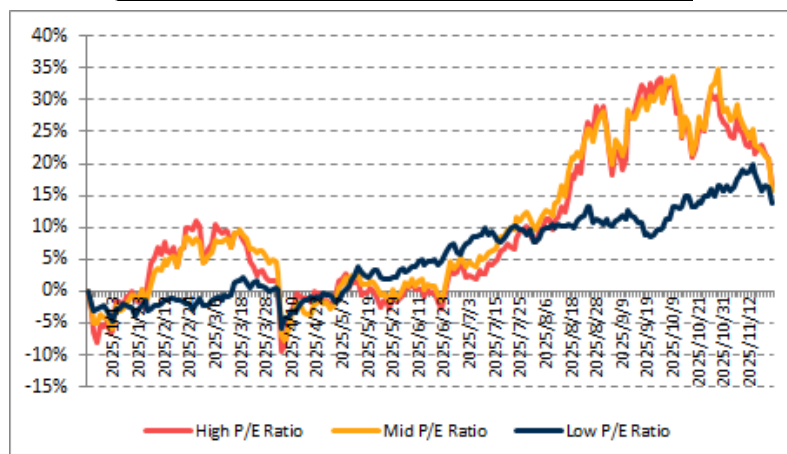
Source: Banyan Partners



## 4 Investment Style Performance

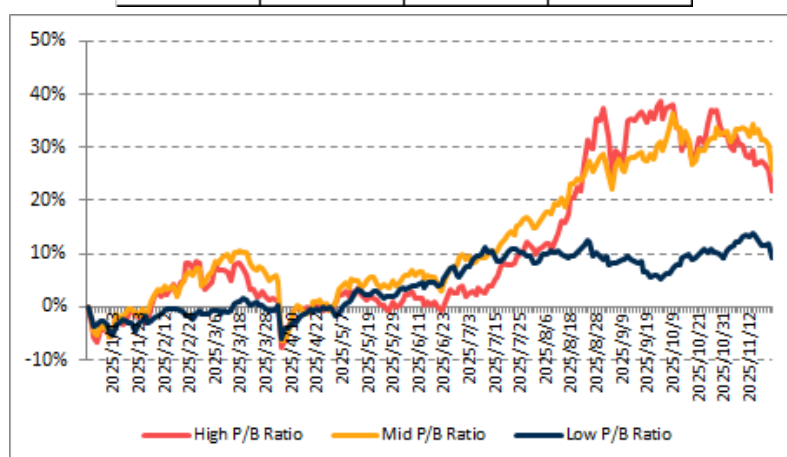
The performance of the investment style is assessed by using two metrics: P/E ratio and P/B ratio. For each metric, we categorize the data into three groups: high, mid, and low.

PE	High P/E Ratio	Mid P/E Ratio	Low P/E Ratio
YTD	16.7%	15.8%	13.7%



Source: Banyan Partners

PB	High P/B Ratio	Mid P/B Ratio	Low P/B Ratio
YTD	21.8%	25.6%	9.4%



Source: Banyan Partners

### Disclaimer

This material is provided for information purposes only and is not intended as an offer or solicitation for the purchases or sale of any financial instrument. Information has been obtained from sources believed to be reliable, but Banyan Partners or its affiliates, does not warrant as to its completeness or accuracy. Opinions and estimates constitute the judgment of Banyan Partners as of the date of this material and are subject to change without notice. Past performance is not indicative of future results. This document was last updated Nov 21 2025.

