

Banyan Market Dashboard



Issue 39, 2025 VOL.No.466

SHANGHAI, FRIDAY, Oct 24, 2025

榜样投资 | BANYAN
PARTNERS

1 Industry Performance

Banyan Partners categorizes listed companies into 131 industries, tracking the most relevant 124. Each week, we highlight the 15 best and worst-performing industries.

Industry	YTD (%)	2024 (%)	5-year P/E Quantile	5-year P/B Quantile
Communications Equipment	103.16	34.06	98.3	98.5
Electronic Components	100.05	29.63	98.2	98.1
Rare Metals	76.10	6.45	76.4	66.6
Energy Metals	74.59	-21.03	69.5	47.7
Appliance Parts	73.95	-8.38	77.4	67.5
Industrial Metals	73.17	12.22	83.1	99.2
Gaming	68.86	-0.23	92.3	97.3
Precious Metals	68.69	8.55	34.0	99.0
Electric Machinery	67.23	1.75	97.0	94.7
Weapons & Ammunition	66.94	-4.56	93.9	95.8
Plastics	54.18	-9.57	97.4	77.0
Consumer Electronics	53.73	14.03	95.5	78.4
Semiconductors	52.20	24.48	96.0	70.5
Battery Manufacturing	50.62	17.57	60.6	44.6
Metallic New Materials	48.86	5.90	98.1	91.9

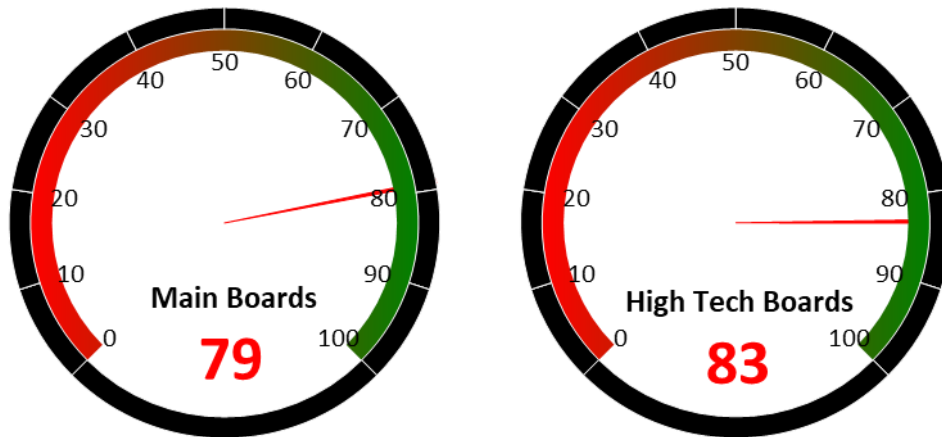
Industry	YTD (%)	2024 (%)	5-year P/E Quantile	5-year P/B Quantile
Publishing	0.84	6.68	92.5	82.8
Coal Mining	0.75	7.10	99.9	64.7
General Retail	0.68	29.35	96.6	96.8
Dairy Beverages	0.33	13.78	57.1	52.5
Traditional Chinese Medicine	-1.27	-6.63	53.3	20.1
Oil & Gas Refining	-1.85	4.62	98.1	30.6
Homebuilding	-2.92	19.09	97.5	21.8
Kitchen & Bathroom Appliances	-3.23	4.72	45.8	16.1
Soft drinks & Non-Alcoholic Beverages	-4.85	4.29	18.5	17.6
White Goods	-5.36	39.09	14.2	19.5
Condiments	-7.02	3.67	24.3	8.9
Alcoholic Beverages	-7.16	-13.10	11.1	10.4
Rails & Highways	-9.77	19.52	67.8	51.2
Hospitality	-10.19	-12.84	29.3	7.2
Chain Stores	-12.65	51.05	99.9	82.7

Source: Banyan Partners



2 Market Sentiment Dashboard

Our Market Sentiment Dashboard tracks the "Main Boards" and the "High Tech Boards". For the Shanghai Stock Exchange and the Shenzhen Stock Exchange there is a separate "Main Board" and "High Tech Board". Our "Main Boards" consist of the Shanghai and Shenzhen main boards. Our "High Tech Boards" consist of the Shanghai "STAR Market" and the Shenzhen "ChiNext Market". We measure the sentiment of the respective boards based on the performance of individual stocks and their industries. A score between 0 and 40 indicates bearish market sentiment, between 40 and 60 indicates neutral sentiment, and between 60 and 100 indicates bullish sentiment.



Source: Banyan Partners

3 Unusual Volume Change

Last Friday, Oct 24, 2025, there were 81 stocks with an unusually high change in volume. These 81 stocks were spread across 41 sectors, 7 in Industrial Machinery, 5 in Coal Mining, 5 in Coking Coal, 4 in Speciality Equipment, 3 in Gas Utilities.

Top 20 Stocks with unusual volume change in multiples

Ticker	Name	Industry	Volume Change (x)
600681.sh	百川能源	Gas Utilities	9.9
000626.sz	远大控股	Logistics	8.7
002083.sz	孚日股份	Textile Manufacturing	8.7
301468.sz	博盈特焊	Industrial Machinery	7.3
300626.sz	华瑞股份	Electric Machinery	6.9
000852.sz	石化机械	Speciality Equipment	6.8
603933.sh	睿能科技	Other Electronics	6.6
000952.sz	广济药业	Pharmaceuticals	6.6
002054.sz	德美化工	Commodity Chemicals	6.5
603938.sh	三孚股份	Chemical Raw Materials	6.5
301158.sz	德石股份	Speciality Equipment	6.5
002728.sz	特一药业	Traditional Chinese Medicine	6.2
600617.sh	国新能源	Gas Utilities	6.1
600408.sh	安泰集团	Coking Coal	6.0
600168.sh	武汉控股	Environmental Governance	5.8
301211.sz	亨迪药业	Pharmaceuticals	5.7
000692.sz	惠天热电	Electric Utilities	5.6
920694.bj	中裕科技	Rubbers	5.6
000509.sz	华塑控股	Optoelectronics	5.4
600078.sh	澄星股份	Fertilizers & Agricultural Chemicals	5.4

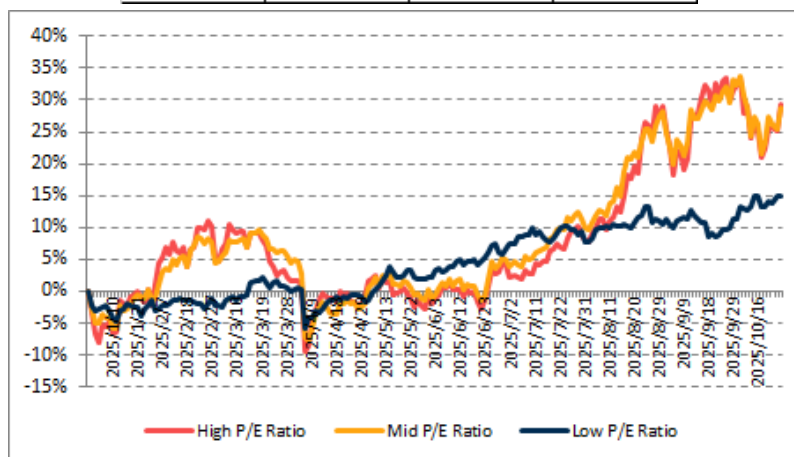
Source: Banyan Partners



4 Investment Style Performance

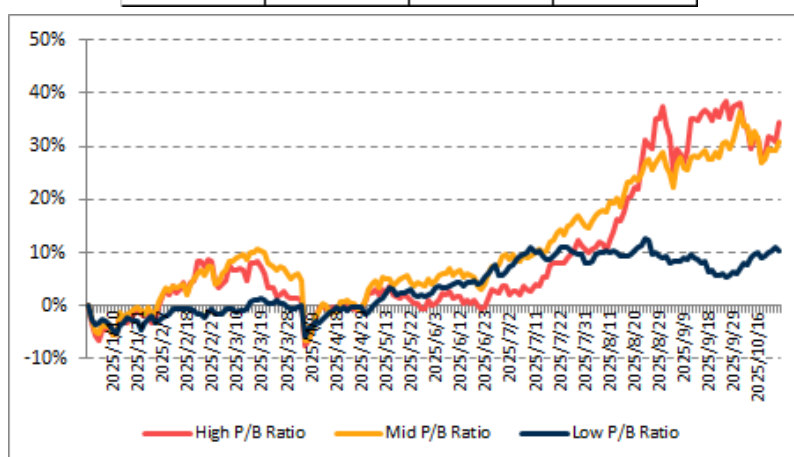
The performance of the investment style is assessed by using two metrics: P/E ratio and P/B ratio. For each metric, we categorize the data into three groups: high, mid, and low.

PE	High P/E Ratio	Mid P/E Ratio	Low P/E Ratio
YTD	29.4%	28.7%	14.9%



Source: Banyan Partners

PB	High P/B Ratio	Mid P/B Ratio	Low P/B Ratio
YTD	34.4%	30.9%	10.3%



Source: Banyan Partners

Disclaimer

This material is provided for information purposes only and is not intended as an offer or solicitation for the purchases or sale of any financial instrument. Information has been obtained from sources believed to be reliable, but Banyan Partners or its affiliates, does not warrant as to its completeness or accuracy. Opinions and estimates constitute the judgment of Banyan Partners as of the date of this material and are subject to change without notice. Past performance is not indicative of future results. This document was last updated Oct 24 2025.

