

Banyan Market Dashboard



Issue 18, 2026 VOL.No.494

SHANGHAI, FRIDAY, May 15, 2026

榜样投资 | BANYAN PARTNERS

1 Industry Performance

Banyan Partners categorizes listed companies into 131 industries, tracking the most relevant 124. Each week, we highlight the 15 best and worst-performing industries.

Industry	YTD (%)	2024 (%)	5-year P/E Quantile	5-year P/B Quantile
Fiberglass	69.07	58.66	99.8	90.0
Communications Equipment	56.83	130.60	99.6	100.0
Electronic Chemicals	55.19	49.71	99.9	97.8
Non-Metallic Materials	53.82	26.76	96.3	62.8
Electronic Components	50.03	105.54	99.6	99.8
Semiconductors	43.95	45.99	93.0	89.8
Automation Equipment	42.57	33.57	99.9	92.0
Rare Metals	32.92	96.19	84.2	88.5
Environmental Protection Equipment	32.42	25.14	98.1	99.7
Other Power Equipment	28.98	42.94	99.2	87.7
Lighting Equipments	25.97	12.58	99.5	87.3
Miscellaneous	25.13	43.56	99.6	99.6
Electric Power Transmission & Distribution	24.89	33.64	98.3	97.3
Other Electronics	24.73	49.23	86.0	100.0
Oil & Gas Equipment & Services	23.02	7.20	59.3	94.2

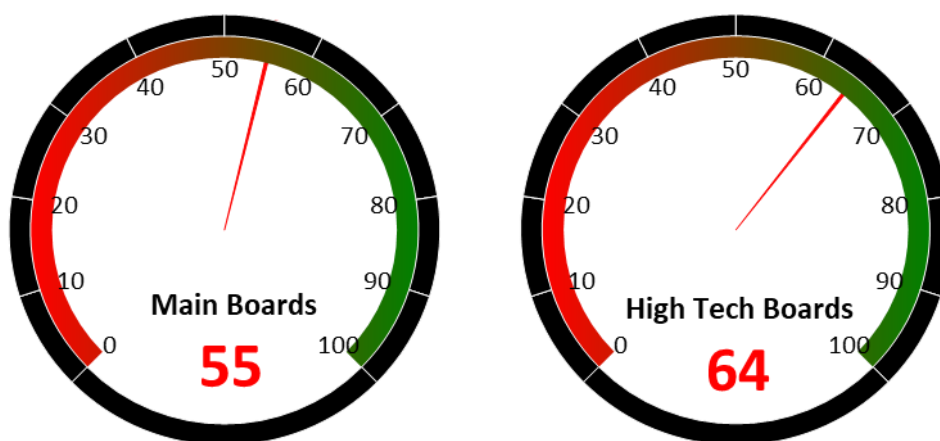
Industry	YTD (%)	2024 (%)	5-year P/E Quantile	5-year P/B Quantile
Livestock Farming	-9.65	13.45	55.3	13.6
Small Household Appliances	-9.79	8.85	64.4	1.2
Fishery	-10.02	12.43	86.6	95.5
Alcoholic Beverages	-10.50	-13.93	36.4	0.1
Joint-Stock Commercial Banks	-11.66	5.53	44.7	7.1
Passenger Vehicles	-11.97	-4.34	63.1	0.5
Personal Care	-12.27	16.28	61.0	23.5
Hospitality	-12.29	-0.31	11.2	4.7
Brokerages	-13.37	2.59	1.2	21.3
Feed	-13.67	8.74	47.8	19.4
Tourism	-16.01	8.16	26.8	27.8
General Retail	-16.53	3.03	80.5	86.7
Education	-17.73	6.69	71.2	66.7
Insurances	-18.74	26.42	6.2	37.3
Airports	-24.13	11.73	0.0	18.2

Source: Banyan Partners



2 Market Sentiment Dashboard

Our Market Sentiment Dashboard tracks the "Main Boards" and the "High Tech Boards". For the Shanghai Stock Exchange and the Shenzhen Stock Exchange there is a separate "Main Board" and "High Tech Board". Our "Main Boards" consist of the Shanghai and Shenzhen main boards. Our "High Tech Boards" consist of the Shanghai "STAR Market" and the Shenzhen "ChiNext Market". We measure the sentiment of the respective boards based on the performance of individual stocks and their industries. A score between 0 and 40 indicates bearish market sentiment, between 40 and 60 indicates neutral sentiment, and between 60 and 100 indicates bullish sentiment.



Source: Banyan Partners

3 Unusual Volume Change

Last Friday, May 15, 2026, there were 87 stocks with an unusually high change in volume. These 87 stocks were spread across 50 sectors, 5 in Industrial Machinery, 4 in Semiconductors, 3 in Medical Devices, 3 in Automation Equipment, 3 in Renovation Materials

Top 20 Stocks with unusual volume change in multiples

Ticker	Name	Industry	Volume Change (x)
002030.sz	达安基因	Medical Devices	10.0
600130.sh	波导股份	Consumer Electronics	9.7
920699.bj	海达尔	Appliance Parts	8.5
300965.sz	恒宇信通	Aviation Parts & Equipment	7.4
603636.sh	南威软件	IT Services	7.3
002031.sz	巨轮智能	Speciality Equipment	7.2
600936.sh	北投科技	TV Broadcasting	6.8
605186.sh	健麾信息	Automation Equipment	6.8
300430.sz	*ST益通	Industrial Machinery	6.7
600198.sh	大唐电信	Communications Equipment	6.4
301288.sz	*ST清研	Environmental Protection Equipment	6.4
603439.sh	三力制药	Traditional Chinese Medicine	6.3
920580.bj	科创新材	Renovation Materials	6.3
301028.sz	鼎熔岩	Industrial Machinery	6.1
601609.sh	金田股份	Industrial Metals	6.0
603278.sh	大业股份	Industrial Machinery	5.8
600379.sh	宝光股份	Electric Power Transmission & Distribution	5.7
603378.sh	*ST亚士	Renovation Materials	5.6
600854.sh	春兰股份	Real Estate Development	5.5
002081.sz	金螳螂	Decoration Materials	5.4

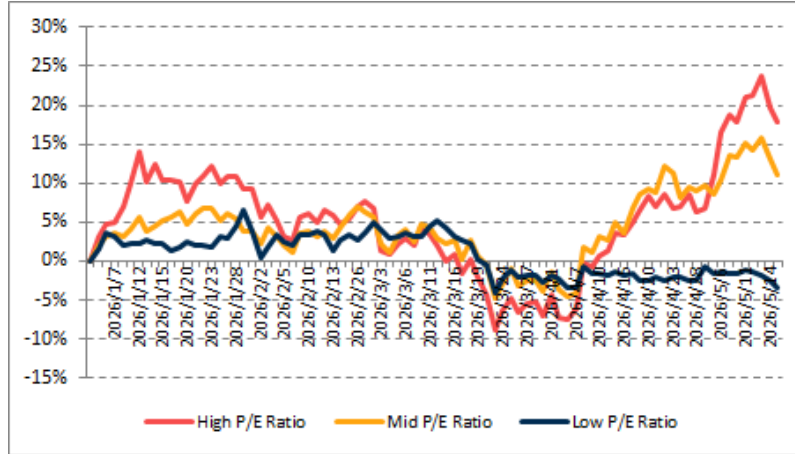
Source: Banyan Partners



4 Investment Style Performance

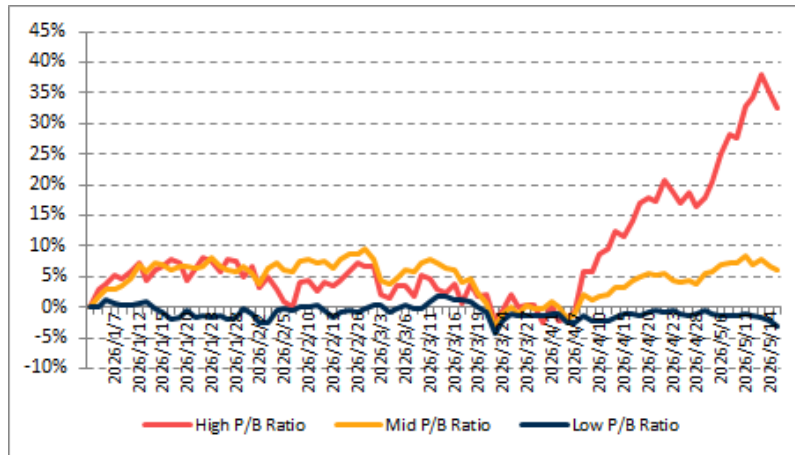
The performance of the investment style is assessed by using two metrics: P/E ratio and P/B ratio. For each metric, we categorize the data into three groups: high, mid, and low.

PE	High P/E Ratio	Mid P/E Ratio	Low P/E Ratio
YTD	17.9%	11.1%	-3.3%



Source: Banyan Partners

PB	High P/B Ratio	Mid P/B Ratio	Low P/B Ratio
YTD	32.7%	6.2%	-3.1%



Source: Banyan Partners

Disclaimer

This material is provided for information purposes only and is not intended as an offer or solicitation for the purchases or sale of any financial instrument. Information has been obtained from sources believed to be reliable, but Banyan Partners or its affiliates, does not warrant as to its completeness or accuracy. Opinions and estimates constitute the judgment of Banyan Partners as of the date of this material and are subject to change without notice. Past performance is not indicative of future results. This document was last updated May 15 2025.

