

# Banyan Market Dashboard



Issue 44, 2025 VOL.No.471

SHANGHAI, FRIDAY, Nov 28, 2025

榜样投资 | BANYAN PARTNERS

## 1 Industry Performance

Banyan Partners categorizes listed companies into 131 industries, tracking the most relevant 124. Each week, we highlight the 15 best and worst-performing industries.

Industry	YTD (%)	2024 (%)	5-year P/E Quantile	5-year P/B Quantile
Communications Equipment	98.13	34.06	97.0	98.1
Electronic Components	89.82	29.63	94.9	96.2
Energy Metals	84.84	-21.03	70.4	49.7
Rare Metals	74.80	6.45	73.7	61.6
Precious Metals	72.35	8.55	18.4	94.6
Industrial Metals	70.81	12.22	72.4	97.2
Weapons & Ammunition	66.06	-4.56	89.2	92.7
Appliance Parts	60.99	-8.38	64.7	49.0
Gaming	60.55	-0.23	78.6	93.1
Electric Machinery	55.88	1.75	92.2	84.3
Plastics	53.24	-9.57	93.8	71.0
Battery Manufacturing	51.10	17.57	57.8	44.6
Metallurgical Materials	44.66	-9.16	98.7	56.8
Other Electronics	43.95	26.72	95.5	96.7
Miscellaneous	43.26	3.22	55.3	85.2

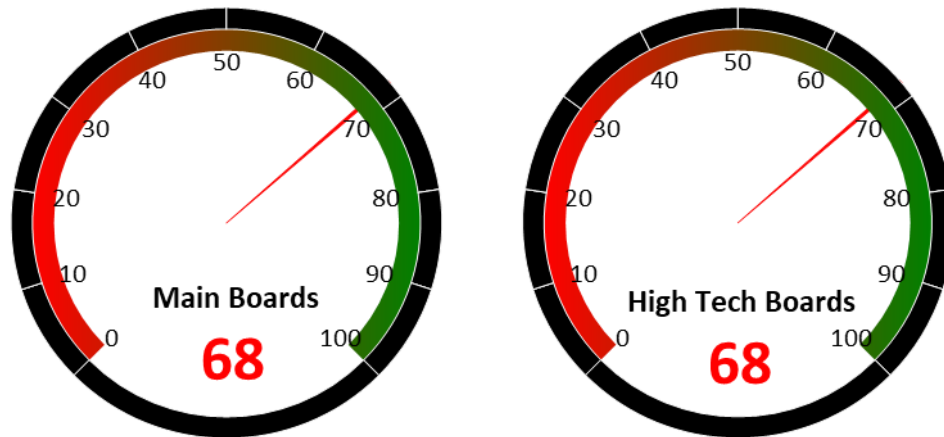
Industry	YTD (%)	2024 (%)	5-year P/E Quantile	5-year P/B Quantile
Brokerages	-0.08	29.57	11.0	51.4
Publishing	-0.25	6.68	85.6	71.0
Kitchen & Bathroom Appliances	-0.38	4.72	56.9	21.4
White Goods	-0.60	39.09	32.5	23.0
Traditional Chinese Medicine	-1.58	-6.63	55.2	21.3
Hospitality	-1.90	-12.84	31.2	17.9
Rail Transportation	-2.36	23.57	53.4	82.2
Coal Mining	-3.11	7.10	98.8	46.9
Passenger Vehicles	-4.87	30.48	29.5	3.5
Alcoholic Beverages	-6.99	-13.10	18.3	2.6
Soft drinks & Non-Alcoholic Beverages	-7.55	4.29	6.5	7.1
Condiments	-7.76	3.67	22.8	4.9
Homebuilding	-10.76	19.09	92.4	1.4
Rails & Highways	-12.81	19.52	59.5	13.6
Chain Stores	-15.66	51.05	98.3	76.0

Source: Banyan Partners



## 2 Market Sentiment Dashboard

Our Market Sentiment Dashboard tracks the "Main Boards" and the "High Tech Boards". For the Shanghai Stock Exchange and the Shenzhen Stock Exchange there is a separate "Main Board" and "High Tech Board". Our "Main Boards" consist of the Shanghai and Shenzhen main boards. Our "High Tech Boards" consist of the Shanghai "STAR Market" and the Shenzhen "ChiNext Market". We measure the sentiment of the respective boards based on the performance of individual stocks and their industries. A score between 0 and 40 indicates bearish market sentiment, between 40 and 60 indicates neutral sentiment, and between 60 and 100 indicates bullish sentiment.



Source: Banyan Partners

## 3 Unusual Volume Change

Last Friday, Nov 28, 2025, there were 97 stocks with an unusually high change in volume. These 97 stocks were spread across 54 sectors, 9 in IT Services, 5 in Software, 5 in Defense Electronics, 4 in Advertising, 3 in Commodity Chemicals.

Top 20 Stocks with unusual volume change in multiples

Ticker	Name	Industry	Volume Change (x)
000859.sz	国风新材	Plastics	9.0
300516.sz	久之洋	Other Electronics	7.4
001387.sz	雪祺电气	White Goods	7.3
002413.sz	雷科防务	Defense Electronics	7.1
002877.sz	智能自控	Industrial Machinery	7.1
300500.sz	启迪设计	Engineering Consulting Services	7.0
000547.sz	航天发展	Defense Electronics	6.8
000078.sz	海王生物	Pharmaceutical Business	6.8
300215.sz	电科院	Professional Service	6.3
000798.sz	中水渔业	Fishery	6.1
002977.sz	火箭科技	Defense Electronics	6.0
600343.sh	航天动力	Industrial Machinery	5.9
301111.sz	粤万年青	Traditional Chinese Medicine	5.8
002301.sz	齐心集团	Stationery Products	5.8
301159.sz	三维天地	Software	5.8
301001.sz	凯淳股份	E-Commerce	5.6
002753.sz	永东股份	Rubbers	5.4
605339.sh	南侨食品	Snack Food Packaging	5.4
301025.sz	读客文化	Publishing	5.3
002712.sz	思美传媒	Advertising	5.2

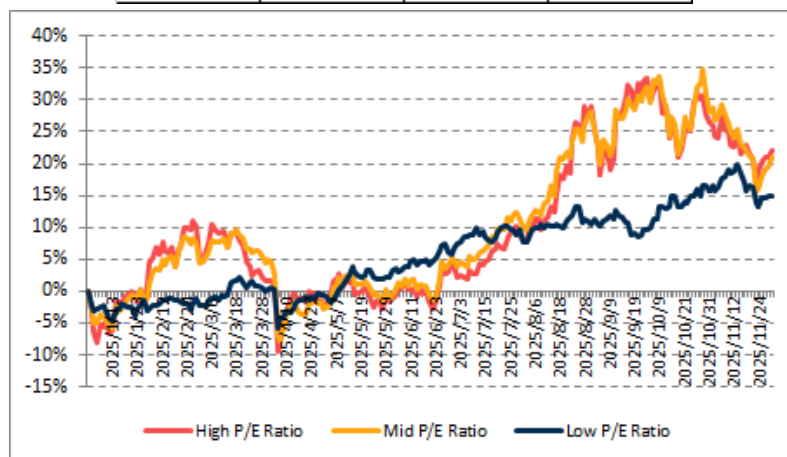
Source: Banyan Partners



## 4 Investment Style Performance

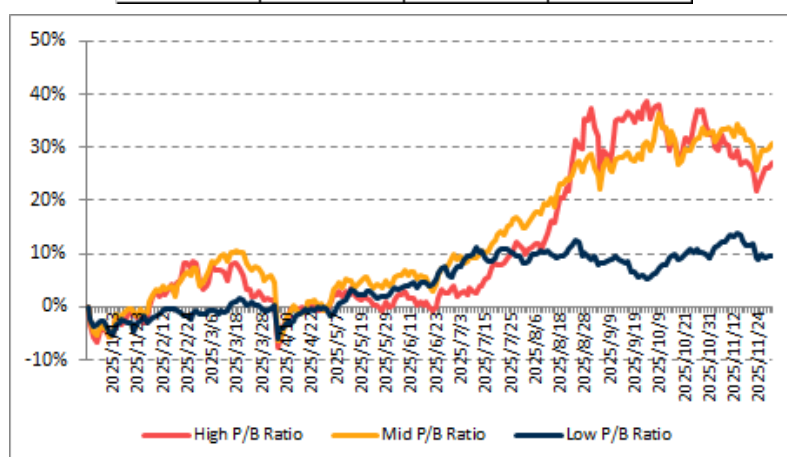
The performance of the investment style is assessed by using two metrics: P/E ratio and P/B ratio. For each metric, we categorize the data into three groups: high, mid, and low.

PE	High P/E Ratio	Mid P/E Ratio	Low P/E Ratio
YTD	22.1%	21.0%	14.9%



Source: Banyan Partners

PB	High P/B Ratio	Mid P/B Ratio	Low P/B Ratio
YTD	27.2%	30.9%	9.5%



Source: Banyan Partners

### Disclaimer

This material is provided for information purposes only and is not intended as an offer or solicitation for the purchases or sale of any financial instrument. Information has been obtained from sources believed to be reliable, but Banyan Partners or its affiliates, does not warrant as to its completeness or accuracy. Opinions and estimates constitute the judgment of Banyan Partners as of the date of this material and are subject to change without notice. Past performance is not indicative of future results. This document was last updated Nov 28 2025.

