

Banyan Market Dashboard



Issue 15, 2026 VOL.No.491

SHANGHAI, FRIDAY, Apr 24, 2026

榜样投资 | BANYAN PARTNERS

1 Industry Performance

Banyan Partners categorizes listed companies into 131 industries, tracking the most relevant 124. Each week, we highlight the 15 best and worst-performing industries.

Industry	YTD (%)	2024 (%)	5-year P/E Quantile	5-year P/B Quantile
Fiberglass	54.07	58.66	100.0	82.9
Communications Equipment	37.83	130.60	99.9	99.9
Electronic Components	35.36	105.54	99.9	99.9
Electronic Chemicals	34.80	49.71	99.8	93.9
Non-Metallic Materials	32.71	26.76	91.3	51.0
Rare Metals	30.53	96.19	93.5	89.2
Oil & Gas Equipment & Services	29.20	7.20	58.0	96.7
Environmental Protection Equipment	25.35	25.14	99.7	99.3
Lighting Equipments	25.18	12.58	99.7	88.2
Electric Power Transmission & Distribut	23.19	33.64	97.3	97.0
Chemical Raw Materials	21.01	18.81	98.9	73.4
Coal Mining	20.56	-6.30	99.0	82.7
Energy Metals	19.63	103.31	73.0	60.3
Wind Power	19.16	45.65	96.7	62.4
Defense Shipbuilding	19.12	3.94	9.3	96.5

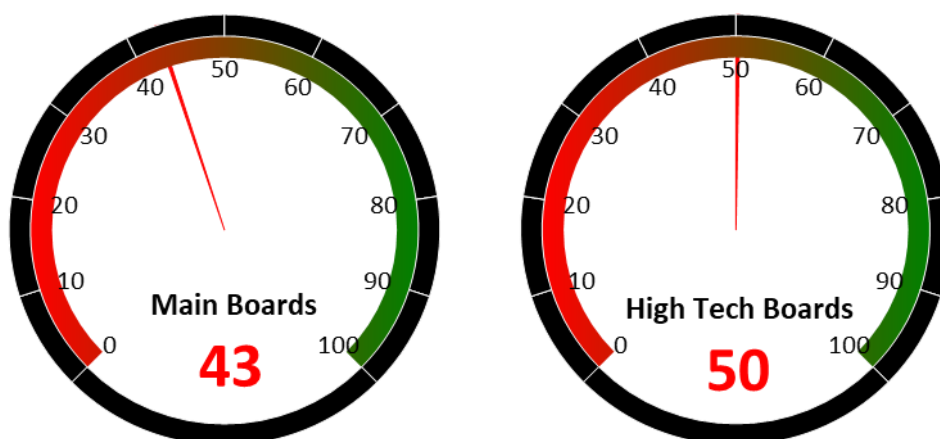
Industry	YTD (%)	2024 (%)	5-year P/E Quantile	5-year P/B Quantile
Software	-7.49	17.23	66.7	54.2
Fishery	-7.98	12.43	39.2	82.1
Construction Machinery	-8.39	35.33	40.8	66.1
Livestock Farming	-8.46	13.45	47.2	7.1
Joint-Stock Commercial Banks	-8.69	5.53	50.7	17.2
Tourism	-9.87	8.16	39.1	45.9
Electric Machinery	-11.20	70.78	84.5	76.9
Small Household Appliances	-11.42	8.85	56.8	3.1
Feed	-11.98	8.74	28.3	8.4
Education	-12.16	6.69	26.7	70.8
Dairy Beverages	-12.20	1.01	45.4	13.6
Brokerages	-12.84	2.59	2.5	26.1
Insurances	-15.31	26.42	7.2	51.2
General Retail	-15.98	3.03	90.6	87.4
Airports	-21.81	11.73	6.9	23.0

Source: Banyan Partners



2 Market Sentiment Dashboard

Our Market Sentiment Dashboard tracks the "Main Boards" and the "High Tech Boards". For the Shanghai Stock Exchange and the Shenzhen Stock Exchange there is a separate "Main Board" and "High Tech Board". Our "Main Boards" consist of the Shanghai and Shenzhen main boards. Our "High Tech Boards" consist of the Shanghai "STAR Market" and the Shenzhen "ChiNext Market". We measure the sentiment of the respective boards based on the performance of individual stocks and their industries. A score between 0 and 40 indicates bearish market sentiment, between 40 and 60 indicates neutral sentiment, and between 60 and 100 indicates bullish sentiment.



Source: Banyan Partners

3 Unusual Volume Change

Last Friday, Apr 24, 2026, there were 69 stocks with an unusually high change in volume. These 69 stocks were spread across 43 sectors, 4 in Real Estate Development, 4 in Commodity Chemicals, 3 in Automotive Parts, 3 in Optoelectronics, 3 in Speciality Equipment.

Top 20 Stocks with unusual volume change in multiples

Ticker	Name	Industry	Volume Change (x)
603178.sh	圣龙股份	Automotive Parts	20.3
920111.bj	聚星科技	Electric Power Transmission & Distribution	8.7
920526.bj	凯华材料	Electronic Chemicals	8.4
002081.sz	金螳螂	Decoration Materials	8.3
603788.sh	宁波高发	Automotive Parts	8.1
605388.sh	均瑶健康	Dairy Beverages	7.3
688227.sh	品高股份	IT Services	7.2
601512.sh	中新集团	Real Estate Development	7.1
600156.sh	华升股份	Textile Manufacturing	6.3
603278.sh	大业股份	Industrial Machinery	6.2
688707.sh	振华新材	Battery Manufacturing	6.1
920003.bj	中诚咨询	Engineering Consulting Services	6.1
920981.bj	晶赛科技	Electronic Components	6.0
688511.sh	天微电子	Defense Electronics	5.8
000404.sz	长虹华意	Appliance Parts	5.8
600103.sh	青山纸业	Paper Products	5.6
002242.sz	九阳股份	Small Household Appliances	5.6
300590.sz	移为通信	Communications Equipment	5.6
600736.sh	苏州高新	Real Estate Development	5.2
301077.sz	星华新材	Commodity Chemicals	5.2

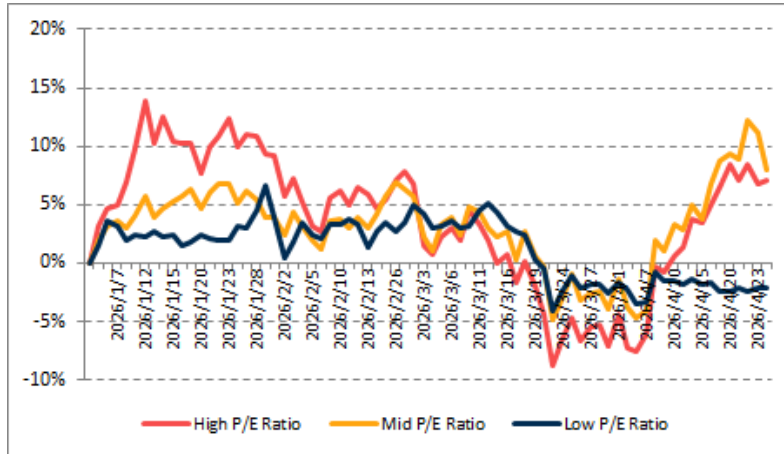
Source: Banyan Partners



4 Investment Style Performance

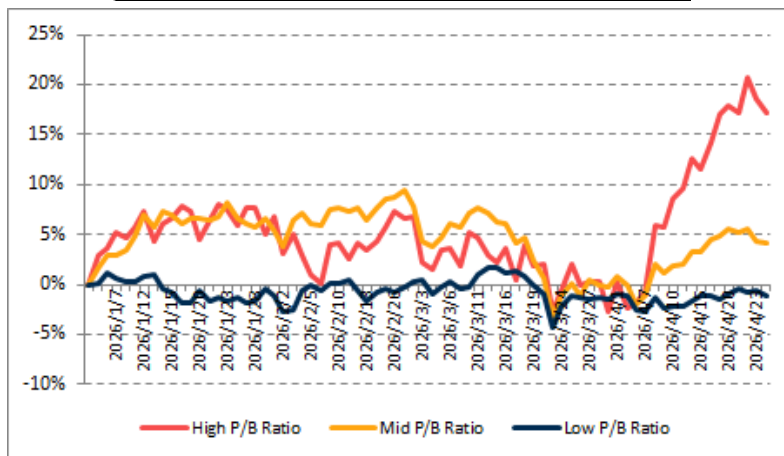
The performance of the investment style is assessed by using two metrics: P/E ratio and P/B ratio. For each metric, we categorize the data into three groups: high, mid, and low.

PE	High P/E Ratio	Mid P/E Ratio	Low P/E Ratio
YTD	7.1%	8.0%	-2.1%



Source: Banyan Partners

PB	High P/B Ratio	Mid P/B Ratio	Low P/B Ratio
YTD	17.1%	4.2%	-1.1%



Source: Banyan Partners

Disclaimer

This material is provided for information purposes only and is not intended as an offer or solicitation for the purchases or sale of any financial instrument. Information has been obtained from sources believed to be reliable, but Banyan Partners or its affiliates, does not warrant as to its completeness or accuracy. Opinions and estimates constitute the judgment of Banyan Partners as of the date of this material and are subject to change without notice. Past performance is not indicative of future results. This document was last updated Apr 24 2025.

