

Banyan Market Dashboard



Issue 41, 2025 VOL.No.468

SHANGHAI, FRIDAY, Nov 07, 2025

榜样投资 | BANYAN PARTNERS

1 Industry Performance

Banyan Partners categorizes listed companies into 131 industries, tracking the most relevant 124. Each week, we highlight the 15 best and worst-performing industries.

Industry	YTD (%)	2024 (%)	5-year P/E Quantile	5-year P/B Quantile
Electronic Components	104.46	29.63	97.7	98.7
Communications Equipment	95.85	34.06	97.1	97.9
Energy Metals	88.26	-21.03	70.6	50.2
Rare Metals	79.29	6.45	74.5	66.3
Industrial Metals	77.23	12.22	78.1	98.9
Appliance Parts	74.55	-8.38	77.0	66.5
Electric Machinery	68.06	1.75	96.8	93.5
Precious Metals	65.43	8.55	10.5	93.6
Weapons & Ammunition	63.01	-4.56	91.0	94.1
Gaming	61.62	-0.23	80.1	93.7
Battery Manufacturing	60.53	17.57	59.1	49.5
Plastics	56.58	-9.57	95.5	74.4
Other Electronics	55.53	26.72	99.0	99.9
Consumer Electronics	51.75	14.03	94.9	79.6
Metallic New Materials	50.49	5.90	96.1	92.1

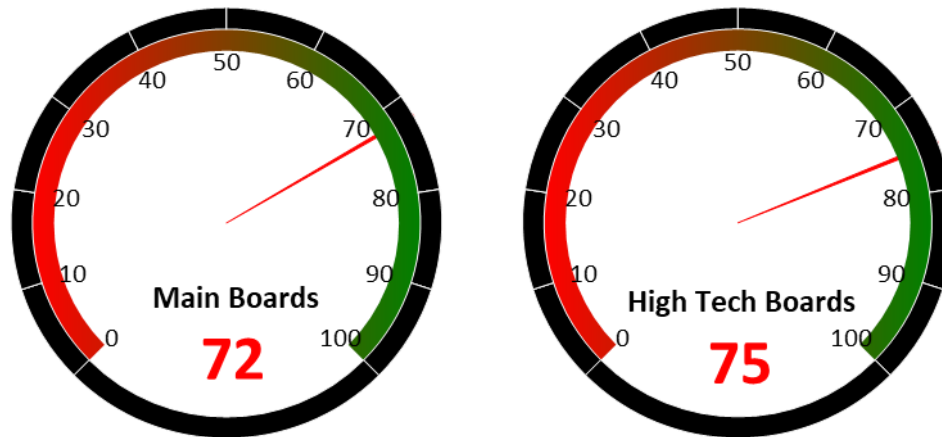
Industry	YTD (%)	2024 (%)	5-year P/E Quantile	5-year P/B Quantile
Telecommunication Carriers	1.84	19.70	51.7	90.1
Digital Media	1.28	-0.72	99.3	43.1
Traditional Chinese Medicine	-0.18	-6.63	53.4	19.1
General Retail	-0.46	29.35	99.8	94.6
Dairy Beverages	-1.40	13.78	50.1	39.7
Passenger Vehicles	-1.48	30.48	41.9	12.6
Kitchen & Bathroom Appliances	-1.68	4.72	53.4	19.7
White Goods	-3.87	39.09	19.6	14.6
Homebuilding	-6.58	19.09	99.8	5.4
Soft drinks & Non-Alcoholic Beverages	-6.78	4.29	7.3	7.9
Condiments	-7.07	3.67	23.8	5.6
Hospitality	-7.21	-12.84	29.6	7.9
Alcoholic Beverages	-8.15	-13.10	16.0	1.5
Rails & Highways	-9.30	19.52	68.8	44.8
Chain Stores	-13.33	51.05	99.7	81.6

Source: Banyan Partners



2 Market Sentiment Dashboard

Our Market Sentiment Dashboard tracks the "Main Boards" and the "High Tech Boards". For the Shanghai Stock Exchange and the Shenzhen Stock Exchange there is a separate "Main Board" and "High Tech Board". Our "Main Boards" consist of the Shanghai and Shenzhen main boards. Our "High Tech Boards" consist of the Shanghai "STAR Market" and the Shenzhen "ChiNext Market". We measure the sentiment of the respective boards based on the performance of individual stocks and their industries. A score between 0 and 40 indicates bearish market sentiment, between 40 and 60 indicates neutral sentiment, and between 60 and 100 indicates bullish sentiment.



Source: Banyan Partners

3 Unusual Volume Change

Last Friday, Nov 07, 2025, there were 86 stocks with an unusually high change in volume. These 86 stocks were spread across 44 sectors, 17 in Electric Power Transmission & Distribution, 4 in Commodity Chemicals, 4 in Industrial Machinery, 3 in Speciality Equipment.

Top 20 Stocks with unusual volume change in multiples

Ticker	Name	Industry	Volume Change (x)
300848.sz	美瑞新材	Commodity Chemicals	12.4
300402.sz	宝色股份	Industrial Machinery	8.9
600308.sh	华泰股份	Paper Products	8.9
002790.sz	瑞尔特	Home-Furnishing Products	8.6
300071.sz	福石控股	Advertising	7.5
920304.bj	迪尔化工	Chemical Raw Materials	7.2
603188.sh	亚邦股份	Commodity Chemicals	7.2
300062.sz	中能电气	Electric Power Transmission & Distribution	6.9
920299.bj	灿能电力	Electric Power Transmission & Distribution	6.9
002300.sz	太阳电缆	Electric Power Transmission & Distribution	6.5
301136.sz	招标股份	Engineering Consulting Services	6.4
300259.sz	新天科技	Industrial Machinery	6.4
000955.sz	欣龙控股	Textile Manufacturing	6.0
603122.sh	合富中国	Pharmaceutical Business	5.7
000720.sz	新能泰山	Electric Power Transmission & Distribution	5.6
688517.sh	金冠电气	Electric Power Transmission & Distribution	5.3
002112.sz	三变科技	Electric Power Transmission & Distribution	5.3
600829.sh	人民同泰	Pharmaceutical Business	5.3
002591.sz	恒大高新	Commodity Chemicals	5.2
002333.sz	罗普斯金	Renovation Materials	5.2

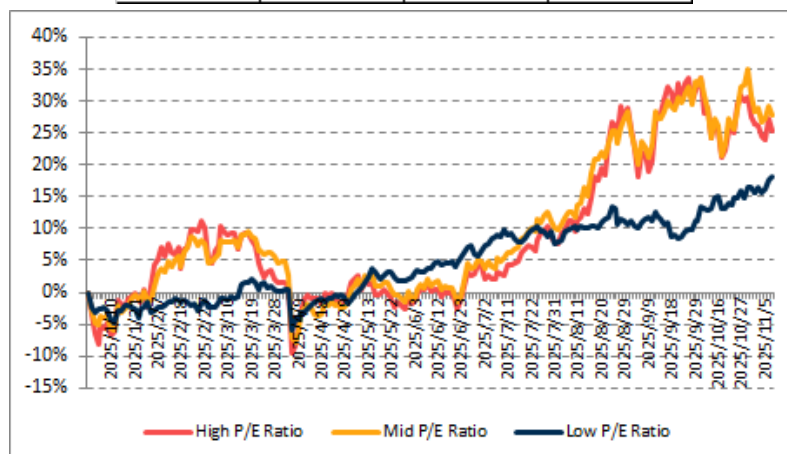
Source: Banyan Partners



4 Investment Style Performance

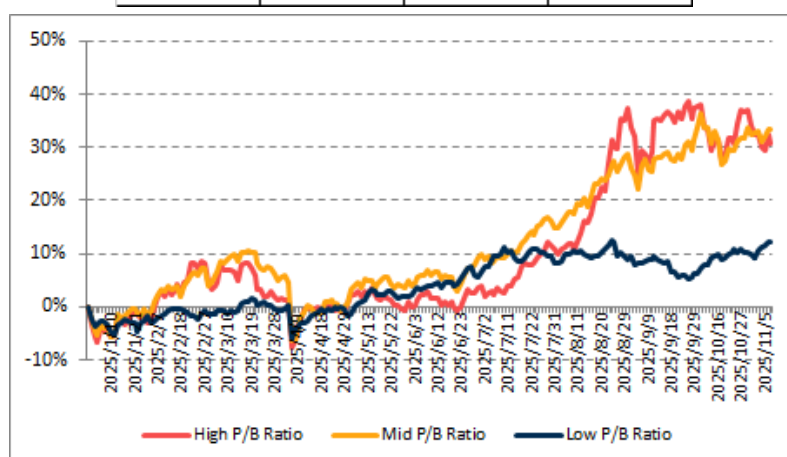
The performance of the investment style is assessed by using two metrics: P/E ratio and P/B ratio. For each metric, we categorize the data into three groups: high, mid, and low.

PE	High P/E Ratio	Mid P/E Ratio	Low P/E Ratio
YTD	25.3%	27.7%	18.0%



Source: Banyan Partners

PB	High P/B Ratio	Mid P/B Ratio	Low P/B Ratio
YTD	30.7%	33.4%	12.3%



Source: Banyan Partners

Disclaimer

This material is provided for information purposes only and is not intended as an offer or solicitation for the purchases or sale of any financial instrument. Information has been obtained from sources believed to be reliable, but Banyan Partners or its affiliates, does not warrant as to its completeness or accuracy. Opinions and estimates constitute the judgment of Banyan Partners as of the date of this material and are subject to change without notice. Past performance is not indicative of future results. This document was last updated Nov 07 2025.

