

# Banyan Market Dashboard



Issue 48, 2025 VOL.No.475

SHANGHAI, FRIDAY, Dec 26, 2025

榜样投资 | BANYAN PARTNERS

## 1 Industry Performance

Banyan Partners categorizes listed companies into 131 industries, tracking the most relevant 124. Each week, we highlight the 15 best and worst-performing industries.

Industry	YTD (%)	2024 (%)	5-year P/E Quantile	5-year P/B Quantile
Communications Equipment	134.74	34.06	99.9	99.9
Aerospace & Defense	113.63	7.39	100.0	94.7
Energy Metals	107.04	-21.03	74.2	54.1
Electronic Components	106.98	29.63	97.4	98.4
Rare Metals	97.91	6.45	81.5	75.6
Industrial Metals	97.08	12.22	86.2	99.7
Precious Metals	83.99	8.55	28.2	97.5
Appliance Parts	73.47	-8.38	77.7	64.2
Plastics	66.56	-9.57	99.4	91.7
Weapons & Ammunition	64.27	-4.56	89.5	92.9
Electric Machinery	63.06	1.75	94.6	89.5
Fiberglass	62.77	-9.07	92.1	54.2
Gaming	60.88	-0.23	78.1	92.9
Metallic New Materials	54.08	5.90	97.4	94.2
Electronic Chemicals	53.90	-3.40	98.1	81.8

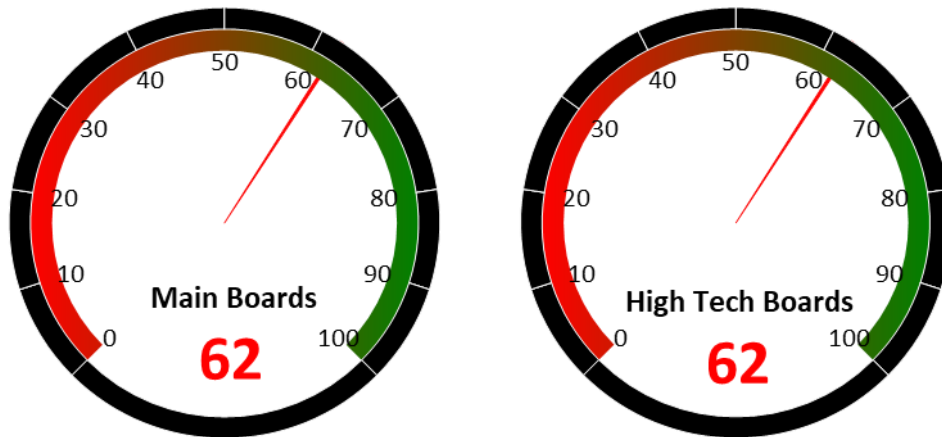
Industry	YTD (%)	2024 (%)	5-year P/E Quantile	5-year P/B Quantile
White Goods	-1.55	39.09	27.4	19.6
Telecommunication Carriers	-2.27	19.70	45.7	81.1
Passenger Vehicles	-2.75	30.48	30.7	4.3
Rail Transportation	-3.21	23.57	55.0	83.8
Kitchen & Bathroom Appliances	-3.77	4.72	51.3	14.2
Traditional Chinese Medicine	-4.02	-6.63	46.9	12.5
Digital Media	-4.71	-0.72	95.6	30.4
Condiments	-5.53	3.67	28.5	10.7
Coal Mining	-5.70	7.10	97.0	35.9
Publishing	-6.23	6.68	82.7	58.9
Soft drinks & Non-Alcoholic Beverages	-10.48	4.29	4.5	5.7
Alcoholic Beverages	-11.45	-13.10	10.3	1.3
Homebuilding	-11.88	19.09	87.4	1.3
Rails & Highways	-12.28	19.52	61.7	18.7
Chain Stores	-14.58	51.05	97.9	76.8

Source: Banyan Partners



## 2 Market Sentiment Dashboard

Our Market Sentiment Dashboard tracks the "Main Boards" and the "High Tech Boards". For the Shanghai Stock Exchange and the Shenzhen Stock Exchange there is a separate "Main Board" and "High Tech Board". Our "Main Boards" consist of the Shanghai and Shenzhen main boards. Our "High Tech Boards" consist of the Shanghai "STAR Market" and the Shenzhen "ChiNext Market". We measure the sentiment of the respective boards based on the performance of individual stocks and their industries. A score between 0 and 40 indicates bearish market sentiment, between 40 and 60 indicates neutral sentiment, and between 60 and 100 indicates bullish sentiment.



Source: Banyan Partners

## 3 Unusual Volume Change

Last Friday, Dec 26, 2025, there were 78 stocks with an unusually high change in volume. These 78 stocks were spread across 45 sectors, 6 in General Retail, 5 in Commodity Chemicals, 4 in Automotive Parts, 4 in Defense Electronics, 4 in Environmental Protection Equipment.

Top 20 Stocks with unusual volume change in multiples

Ticker	Name	Industry	Volume Change (x)
000551.sz	创元科技	Environmental Protection Equipment	11.7
605007.sh	五洲特纸	Paper Products	9.2
920023.bj	田野股份	Agricultural Products	8.1
600838.sh	上海九百	General Retail	7.5
300629.sz	新劲刚	Defense Electronics	7.5
603868.sh	飞科电器	Small Household Appliances	6.8
002810.sz	山东赫达	Commodity Chemicals	6.4
300552.sz	万集科技	Computer Equipments	6.0
603679.sh	华体科技	Optoelectronics	5.9
603324.sh	盛剑科技	Environmental Protection Equipment	5.9
688726.sh	拉普拉斯	Solar Power	5.8
001208.sz	华菱线缆	Electric Power Transmission & Distribution	5.8
605069.sh	正和生态	Environmental Governance	5.8
603203.sh	快克智能	Automation Equipment	5.6
002951.sz	金时科技	Other Power Equipment	5.5
001336.sz	楚环科技	Environmental Protection Equipment	5.5
688150.sh	莱特光电	Electronic Chemicals	5.4
002188.sz	中天服务	Real Estate Services	5.4
002151.sz	北斗星通	Defense Electronics	5.4
600865.sh	百大集团	General Retail	5.3

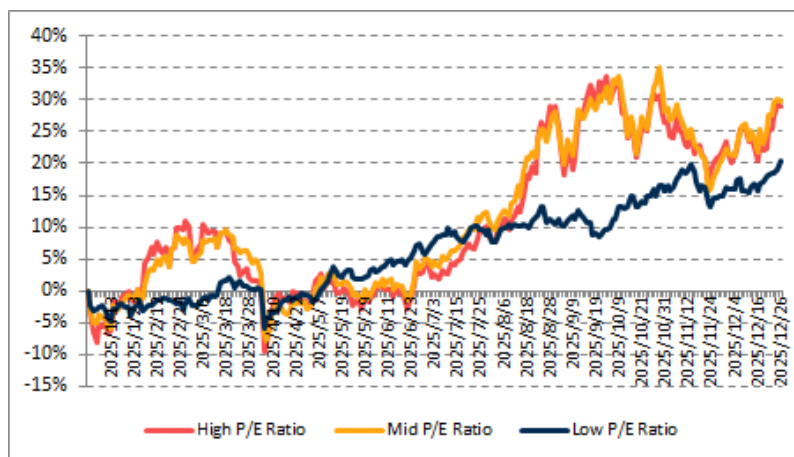
Source: Banyan Partners



## 4 Investment Style Performance

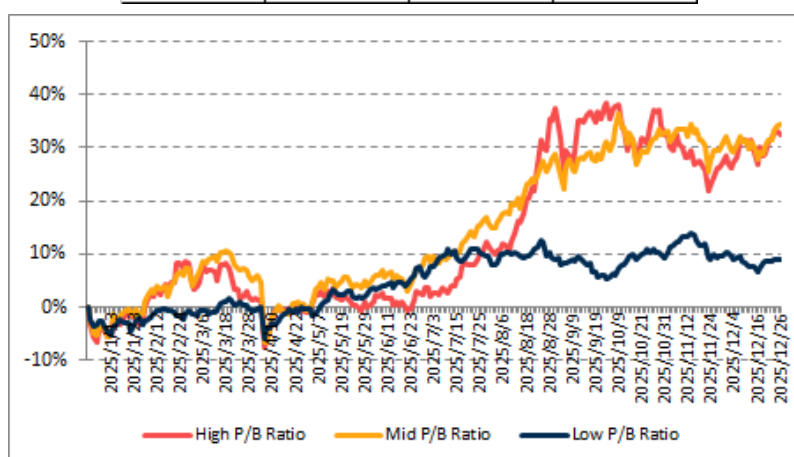
The performance of the investment style is assessed by using two metrics: P/E ratio and P/B ratio. For each metric, we categorize the data into three groups: high, mid, and low.

PE	High P/E Ratio	Mid P/E Ratio	Low P/E Ratio
YTD	28.9%	29.8%	20.4%



Source: Banyan Partners

PB	High P/B Ratio	Mid P/B Ratio	Low P/B Ratio
YTD	32.5%	34.3%	8.9%



Source: Banyan Partners

### Disclaimer

This material is provided for information purposes only and is not intended as an offer or solicitation for the purchases or sale of any financial instrument. Information has been obtained from sources believed to be reliable, but Banyan Partners or its affiliates, does not warrant as to its completeness or accuracy. Opinions and estimates constitute the judgment of Banyan Partners as of the date of this material and are subject to change without notice. Past performance is not indicative of future results. This document was last updated Dec 26 2025.

