

Banyan Market Dashboard



Issue 42, 2025 VOL.No.469

SHANGHAI, FRIDAY, Nov 14, 2025

榜样投资 | BANYAN PARTNERS

1 Industry Performance

Banyan Partners categorizes listed companies into 131 industries, tracking the most relevant 124. Each week, we highlight the 15 best and worst-performing industries.

Industry	YTD (%)	2024 (%)	5-year P/E Quantile	5-year P/B Quantile
Energy Metals	92.91	-21.03	72.0	51.8
Electronic Components	85.55	29.63	95.2	96.9
Communications Equipment	84.01	34.06	96.0	96.7
Industrial Metals	80.00	12.22	81.9	99.7
Rare Metals	76.74	6.45	74.9	66.6
Precious Metals	70.01	8.55	21.9	96.3
Battery Manufacturing	64.46	17.57	62.9	51.3
Appliance Parts	62.39	-8.38	69.7	54.9
Weapons & Ammunition	60.23	-4.56	89.2	92.0
Electric Machinery	58.33	1.75	94.4	89.4
Gaming	57.23	-0.23	79.6	93.5
Plastics	56.36	-9.57	96.4	79.5
Other Electronics	51.96	26.72	99.7	99.9
Miscellaneous	51.05	3.22	64.3	89.0
Fiberglass	48.41	-9.07	87.4	50.6

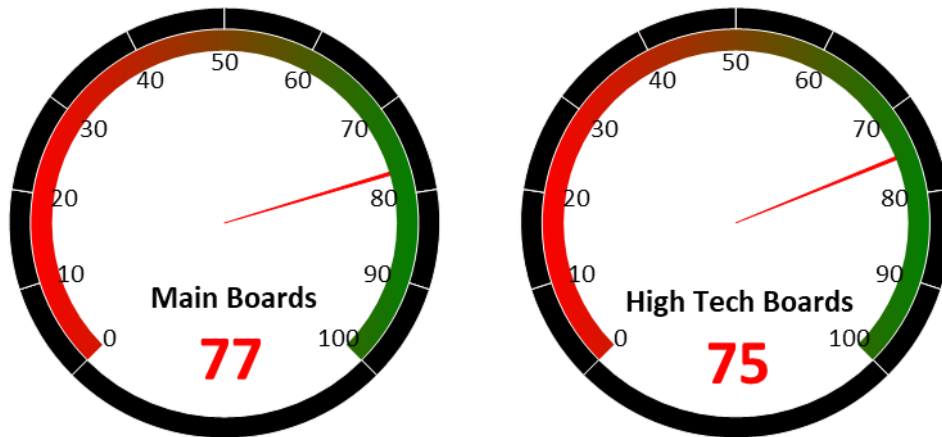
Industry	YTD (%)	2024 (%)	5-year P/E Quantile	5-year P/B Quantile
Rail Transportation	2.56	23.57	79.2	97.2
Kitchen & Bathroom Appliances	2.14	4.72	60.3	25.0
Telecommunication Carriers	1.61	19.70	53.0	91.7
Dairy Beverages	1.59	13.78	60.5	50.4
Digital Media	1.06	-0.72	99.4	44.5
Publishing	0.77	6.68	89.8	83.7
Hospitality	-0.56	-12.84	32.7	23.3
White Goods	-1.11	39.09	32.6	23.8
Passenger Vehicles	-1.44	30.48	44.2	15.0
Soft drinks & Non-Alcoholic Beverages	-3.43	4.29	14.0	16.3
Condiments	-4.83	3.67	27.8	11.8
Alcoholic Beverages	-5.70	-13.10	22.7	5.9
Homebuilding	-6.13	19.09	99.5	5.7
Rails & Highways	-9.45	19.52	68.3	37.3
Chain Stores	-13.51	51.05	99.6	81.4

Source: Banyan Partners



2 Market Sentiment Dashboard

Our Market Sentiment Dashboard tracks the "Main Boards" and the "High Tech Boards". For the Shanghai Stock Exchange and the Shenzhen Stock Exchange there is a separate "Main Board" and "High Tech Board". Our "Main Boards" consist of the Shanghai and Shenzhen main boards. Our "High Tech Boards" consist of the Shanghai "STAR Market" and the Shenzhen "ChiNext Market". We measure the sentiment of the respective boards based on the performance of individual stocks and their industries. A score between 0 and 40 indicates bearish market sentiment, between 40 and 60 indicates neutral sentiment, and between 60 and 100 indicates bullish sentiment.



Source: Banyan Partners

3 Unusual Volume Change

Last Friday, Nov 14, 2025, there were 92 stocks with an unusually high change in volume. These 92 stocks were spread across 44 sectors, 9 in Electric Power Transmission & Distribution, 9 in Commodity Chemicals, 5 in Environmental Governance, 5 in Chemical Raw Materials.

Top 20 Stocks with unusual volume change in multiples

Ticker	Name	Industry	Volume Change (x)
002451.sz	摩恩电气	Electric Power Transmission & Distribution	13.2
300318.sz	博晖创新	Biological Products	9.5
003018.sz	金富科技	Packaging & Printing	8.3
300437.sz	清水源	Environmental Governance	7.8
300821.sz	东岳硅材	Commodity Chemicals	7.6
300937.sz	药易购	Pharmaceutical Business	7.6
600939.sh	重庆建工	Homebuilding	7.3
002309.sz	中利集团	Electric Power Transmission & Distribution	7.0
300272.sz	开能健康	Small Household Appliances	7.0
688670.sh	金迪克	Biological Products	6.9
002300.sz	太阳电缆	Electric Power Transmission & Distribution	6.9
002788.sz	鹭燕医药	Pharmaceutical Business	6.8
600550.sh	保变电气	Electric Power Transmission & Distribution	6.7
002136.sz	安纳达	Chemical Raw Materials	6.6
603180.sh	金牌家居	Home-Furnishing Products	6.5
002485.sz	ST雪发	Logistics	6.5
920726.bj	朱老六	Condiments	6.4
301408.sz	华人健康	Pharmaceutical Business	6.3
300560.sz	中富通	Telecommunication Carriers	6.3
000912.sz	泸天化	Fertilizers & Agricultural Chemicals	6.2

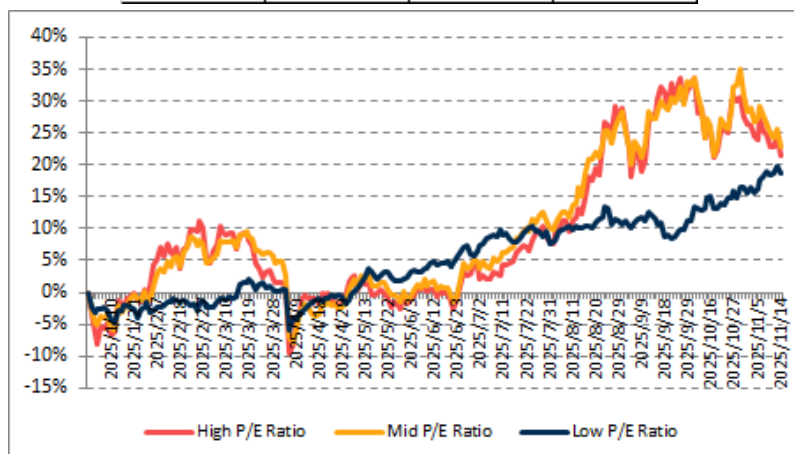
Source: Banyan Partners



4 Investment Style Performance

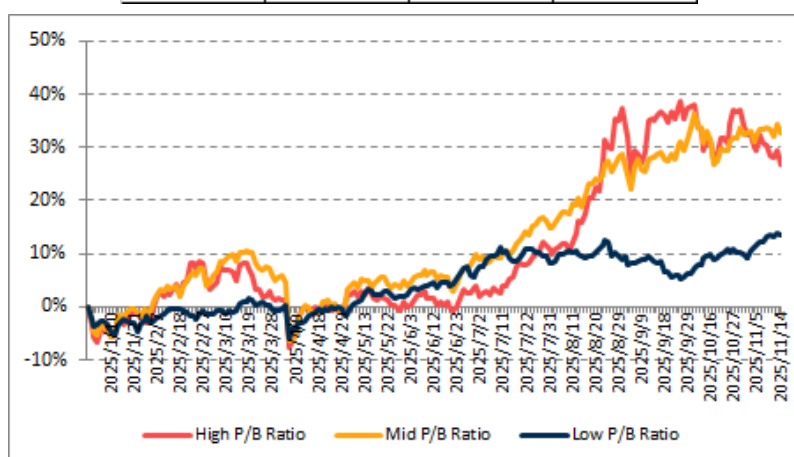
The performance of the investment style is assessed by using two metrics: P/E ratio and P/B ratio. For each metric, we categorize the data into three groups: high, mid, and low.

PE	High P/E Ratio	Mid P/E Ratio	Low P/E Ratio
YTD	21.6%	22.8%	18.6%



Source: Banyan Partners

PB	High P/B Ratio	Mid P/B Ratio	Low P/B Ratio
YTD	26.7%	32.8%	13.6%



Source: Banyan Partners

Disclaimer

This material is provided for information purposes only and is not intended as an offer or solicitation for the purchases or sale of any financial instrument. Information has been obtained from sources believed to be reliable, but Banyan Partners or its affiliates, does not warrant as to its completeness or accuracy. Opinions and estimates constitute the judgment of Banyan Partners as of the date of this material and are subject to change without notice. Past performance is not indicative of future results. This document was last updated Nov 14 2025.

