

Banyan Market Dashboard



Issue 02, 2026 VOL.No.478

SHANGHAI, FRIDAY, Jan 16, 2026

榜样投资 | BANYAN PARTNERS

1 Industry Performance

Banyan Partners categorizes listed companies into 131 industries, tracking the most relevant 124. Each week, we highlight the 15 best and worst-performing industries.

Industry	YTD (%)	2024 (%)	5-year P/E Quantile	5-year P/B Quantile
Advertising	22.24	15.68	98.0	99.8
Digital Media	22.01	-0.63	100.0	77.6
Electronic Chemicals	21.64	49.71	99.8	90.7
Semiconductors	16.51	45.99	96.2	79.4
Rare Metals	16.48	96.19	87.9	86.8
Medical Service	16.04	28.27	61.0	39.5
Software	15.68	17.23	99.3	83.3
Gaming	14.91	60.50	92.6	99.2
Precious Metals	14.64	79.89	53.8	99.9
Wind Power	14.45	45.65	99.4	62.9
Electric Power Transmission & Distribut	14.13	33.64	100.0	94.8
IT Services	13.80	18.42	99.5	99.8
Miscellaneous	13.38	43.56	94.2	99.3
Other Electronics	13.30	49.23	99.9	99.9
TV Broadcasting	13.26	20.80	99.8	99.8

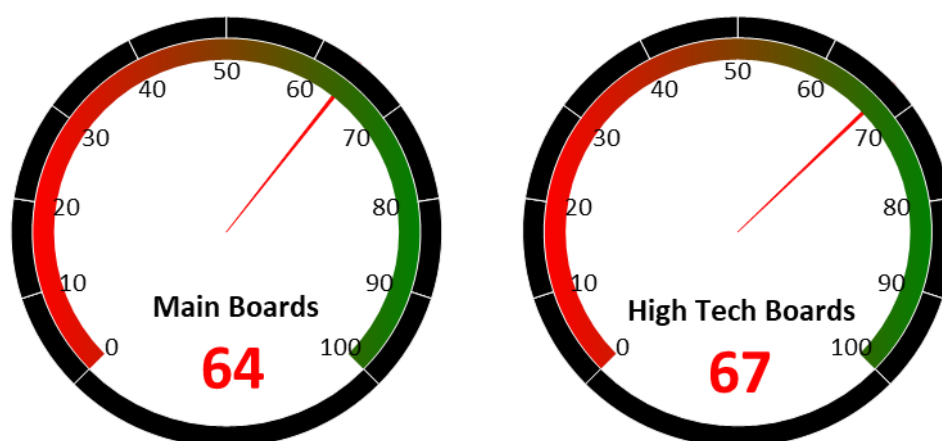
Industry	YTD (%)	2024 (%)	5-year P/E Quantile	5-year P/B Quantile
Commercial Vehicles	-0.51	18.07	16.2	93.8
Personal Care	-0.62	16.28	77.1	46.2
White Goods	-0.76	-2.86	15.4	11.1
Oil & Gas Refining	-1.33	11.56	97.1	72.2
Passenger Vehicles	-1.36	-4.34	30.7	4.3
Feed	-1.52	8.74	22.6	30.8
Rails & Highways	-2.14	-13.83	55.7	9.1
Dairy Beverages	-2.19	1.01	51.7	42.9
Paper Products	-2.27	9.22	90.7	70.3
Rural Banks	-2.85	5.14	52.2	45.0
City Commercial Banks	-3.27	4.43	48.6	25.5
Livestock Farming	-4.83	13.45	31.0	11.2
Airports	-4.84	11.73	40.2	76.6
State-Owned Banks	-5.08	11.80	90.0	87.2
Joint-Stock Commercial Banks	-5.92	5.53	55.2	30.5

Source: Banyan Partners



2 Market Sentiment Dashboard

Our Market Sentiment Dashboard tracks the "Main Boards" and the "High Tech Boards". For the Shanghai Stock Exchange and the Shenzhen Stock Exchange there is a separate "Main Board" and "High Tech Board". Our "Main Boards" consist of the Shanghai and Shenzhen main boards. Our "High Tech Boards" consist of the Shanghai "STAR Market" and the Shenzhen "ChiNext Market". We measure the sentiment of the respective boards based on the performance of individual stocks and their industries. A score between 0 and 40 indicates bearish market sentiment, between 40 and 60 indicates neutral sentiment, and between 60 and 100 indicates bullish sentiment.



Source: Banyan Partners

3 Unusual Volume Change

Last Friday, Jan 16, 2026, there were 257 stocks with an unusually high change in volume. These 257 stocks were spread across 59 sectors, 31 in Software, 26 in IT Services, 18 in Medical Service, 15 in Medical Devices, 9 in Computer Equipments, 9 in Commodity Chemicals.

Top 20 Stocks with unusual volume change in multiples

Ticker	Name	Industry	Volume Change (x)
300987.sz	川网传媒	Digital Media	11.6
688232.sh	新点软件	Software	11.5
688479.sh	友车科技	Software	10.9
300315.sz	掌趣科技	Gaming	10.7
920021.bj	流金科技	TV Broadcasting	10.0
601858.sh	中国科传	Publishing	9.7
600633.sh	浙数文化	Gaming	9.2
600662.sh	外服控股	Professional Service	8.9
002605.sz	姚记科技	Gaming	8.7
300246.sz	宝莱特	Medical Devices	8.5
601949.sh	中国出版	Publishing	8.1
603602.sh	纵横通信	Telecommunication Carriers	8.1
301299.sz	卓创资讯	Digital Media	8.0
603882.sh	金城医学	Medical Service	7.7
688137.sh	近岸蛋白	Biological Products	7.6
000503.sz	国新健康	Software	7.6
000516.sz	国际医学	Medical Service	7.4
301230.sz	泓博医药	Medical Service	7.4
002609.sz	捷顺科技	IT Services	7.3
301275.sz	汉朔科技	Other Electronics	7.2

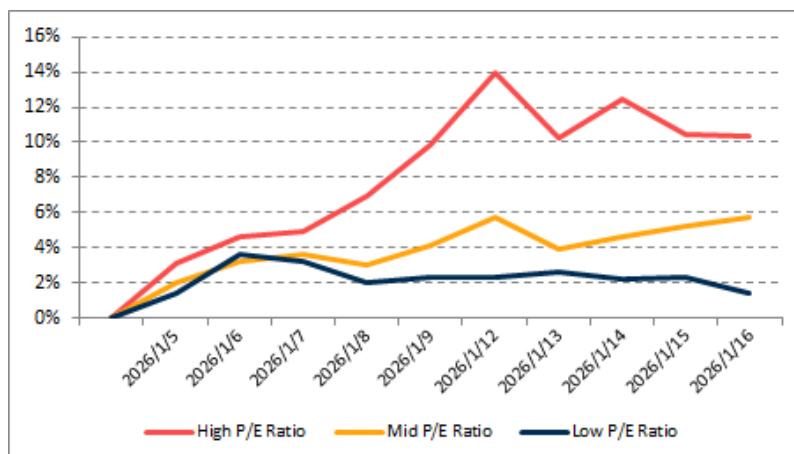
Source: Banyan Partners



4 Investment Style Performance

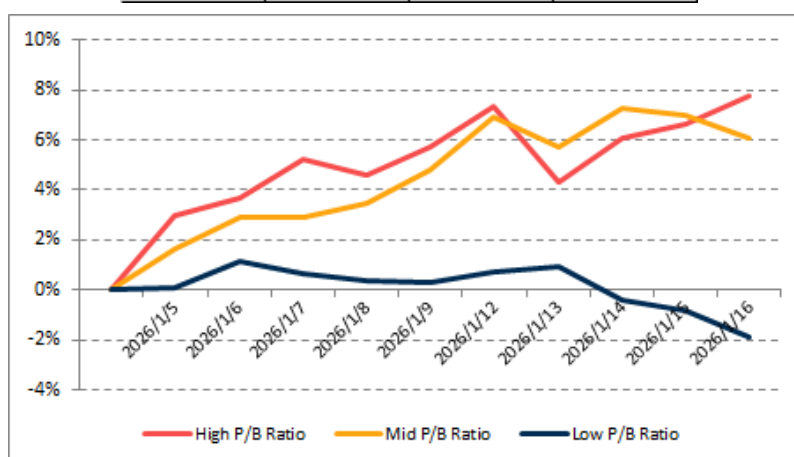
The performance of the investment style is assessed by using two metrics: P/E ratio and P/B ratio. For each metric, we categorize the data into three groups: high, mid, and low.

PE	High P/E Ratio	Mid P/E Ratio	Low P/E Ratio
YTD	10.3%	5.7%	1.5%



Source: Banyan Partners

PB	High P/B Ratio	Mid P/B Ratio	Low P/B Ratio
YTD	7.8%	6.0%	-1.9%



Source: Banyan Partners

Disclaimer

This material is provided for information purposes only and is not intended as an offer or solicitation for the purchases or sale of any financial instrument. Information has been obtained from sources believed to be reliable, but Banyan Partners or its affiliates, does not warrant as to its completeness or accuracy. Opinions and estimates constitute the judgment of Banyan Partners as of the date of this material and are subject to change without notice. Past performance is not indicative of future results. This document was last updated Jan 16 2025.

