

Banyan Market Dashboard



Issue 13, 2026 VOL.No.489

SHANGHAI, FRIDAY, Apr 10, 2026

榜样投资 | BANYAN PARTNERS

1 Industry Performance

Banyan Partners categorizes listed companies into 131 industries, tracking the most relevant 124. Each week, we highlight the 15 best and worst-performing industries.

Industry	YTD (%)	2024 (%)	5-year P/E Quantile	5-year P/B Quantile
Oil & Gas Equipment & Services	37.65	7.20	59.6	97.6
Fiberglass	36.80	58.66	99.4	77.9
Precious Metals	28.23	79.89	67.2	97.0
Communications Equipment	25.90	130.60	100.0	100.0
Non-Metallic Materials	24.72	26.76	89.9	49.4
Rare Metals	24.36	96.19	91.5	89.0
Chemical Raw Materials	20.50	18.81	97.7	73.9
Electronic Chemicals	20.15	49.71	96.8	89.8
Electric Power Transmission & Distribution	19.80	33.64	96.8	94.0
Lighting Equipments	19.23	12.58	99.0	79.7
Marine Ports	18.87	5.08	92.9	80.9
Environmental Protection Equipment	17.21	25.14	98.8	90.2
Professional Engineering	16.94	13.63	99.9	59.9
Coal Mining	16.63	-6.30	97.8	77.3
Fertilizers & Agricultural Chemicals	16.48	40.98	89.6	68.8

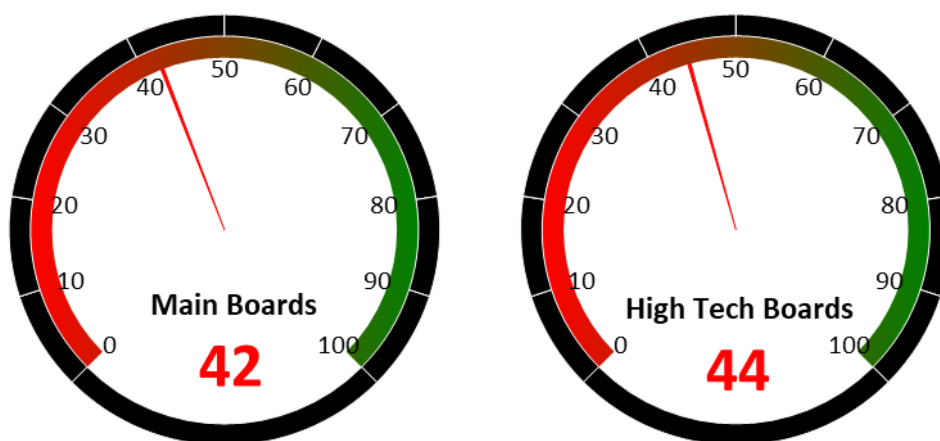
Industry	YTD (%)	2024 (%)	5-year P/E Quantile	5-year P/B Quantile
Real Estate Development	-7.91	1.99	97.4	39.6
Joint-Stock Commercial Banks	-8.02	5.53	51.4	16.9
Software	-8.04	17.23	64.4	48.7
Livestock Farming	-8.19	13.45	38.0	7.4
Education	-8.26	6.69	37.4	68.0
Aerospace & Defense	-8.37	146.03	94.8	95.4
Cosmetics	-8.95	5.30	20.6	12.4
Feed	-9.89	8.74	8.9	13.4
Dairy Beverages	-10.98	1.01	45.9	15.2
Brokerages	-11.99	2.59	0.7	18.2
Electric Machinery	-12.50	70.78	82.5	73.6
Insurances	-13.38	26.42	8.7	54.4
Small Household Appliances	-14.27	8.85	25.0	0.7
General Retail	-15.28	3.03	90.7	82.8
Airports	-20.78	11.73	19.1	26.6

Source: Banyan Partners



2 Market Sentiment Dashboard

Our Market Sentiment Dashboard tracks the "Main Boards" and the "High Tech Boards". For the Shanghai Stock Exchange and the Shenzhen Stock Exchange there is a separate "Main Board" and "High Tech Board". Our "Main Boards" consist of the Shanghai and Shenzhen main boards. Our "High Tech Boards" consist of the Shanghai "STAR Market" and the Shenzhen "ChiNext Market". We measure the sentiment of the respective boards based on the performance of individual stocks and their industries. A score between 0 and 40 indicates bearish market sentiment, between 40 and 60 indicates neutral sentiment, and between 60 and 100 indicates bullish sentiment.



Source: Banyan Partners

3 Unusual Volume Change

Last Friday, Apr 10, 2026, there were 56 stocks with an unusually high change in volume. These 56 stocks were spread across 28 sectors, 13 in Pharmaceuticals, 4 in Pharmaceutical Business, 3 in Electric Power Transmission & Distribution, 3 in Medical Devices.

Top 20 Stocks with unusual volume change in multiples

Ticker	Name	Industry	Volume Change (x)
600488.sh	津药药业	Pharmaceuticals	16.2
920230.bj	欧康医药	Pharmaceuticals	9.2
600594.sh	益佰制药	Traditional Chinese Medicine	8.8
000919.sz	金陵药业	Pharmaceuticals	8.8
002873.sz	新天药业	Traditional Chinese Medicine	8.1
000788.sz	北大医药	Pharmaceuticals	7.5
600056.sh	中国医药	Pharmaceutical Business	7.0
600654.sh	中安科	Software	6.9
688553.sh	汇宇制药	Pharmaceuticals	6.9
000950.sz	重药控股	Pharmaceutical Business	6.6
688098.sh	申联生物	Veterinary	6.1
600664.sh	哈药股份	Pharmaceuticals	6.1
002051.sz	中工国际	Professional Engineering	6.0
300834.sz	星辉环材	Plastics	6.0
603222.sh	济民健康	Medical Devices	5.8
301070.sz	开勒股份	Industrial Machinery	5.6
600743.sh	华远控股	Real Estate Development	5.4
300006.sz	莱美药业	Pharmaceuticals	5.3
301188.sz	力诺药包	Medical Devices	5.2
002263.sz	大东南	Plastics	5.2

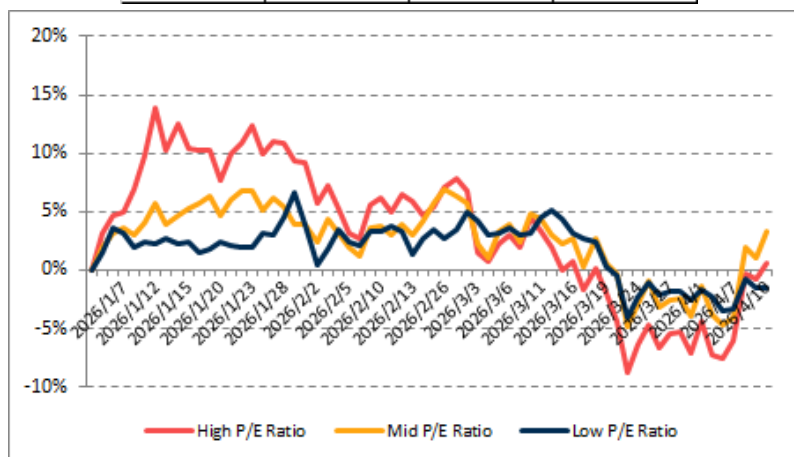
Source: Banyan Partners



4 Investment Style Performance

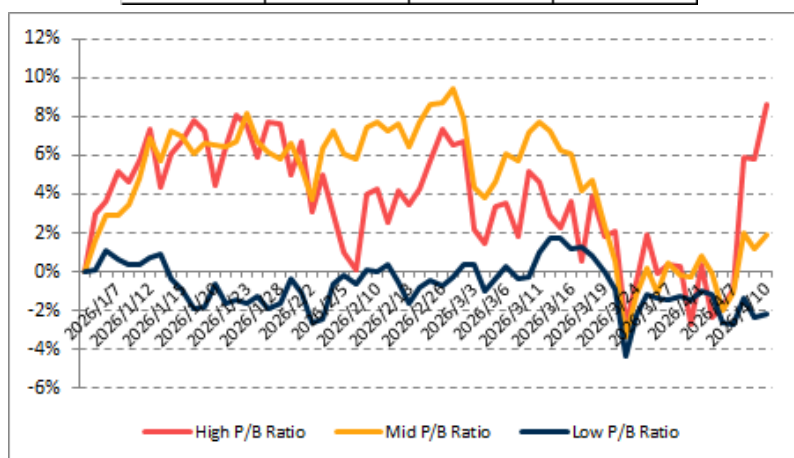
The performance of the investment style is assessed by using two metrics: P/E ratio and P/B ratio. For each metric, we categorize the data into three groups: high, mid, and low.

PE	High P/E Ratio	Mid P/E Ratio	Low P/E Ratio
YTD	0.6%	3.3%	-1.6%



Source: Banyan Partners

PB	High P/B Ratio	Mid P/B Ratio	Low P/B Ratio
YTD	8.6%	1.9%	-2.2%



Source: Banyan Partners

Disclaimer

This material is provided for information purposes only and is not intended as an offer or solicitation for the purchases or sale of any financial instrument. Information has been obtained from sources believed to be reliable, but Banyan Partners or its affiliates, does not warrant as to its completeness or accuracy. Opinions and estimates constitute the judgment of Banyan Partners as of the date of this material and are subject to change without notice. Past performance is not indicative of future results. This document was last updated Apr 10 2025.

