

# Banyan Market Dashboard



Issue 10, 2026 VOL.No.486

SHANGHAI, FRIDAY, Mar 20, 2026

榜样投资 | BANYAN PARTNERS

## 1 Industry Performance

Banyan Partners categorizes listed companies into 131 industries, tracking the most relevant 124. Each week, we highlight the 15 best and worst-performing industries.

Industry	YTD (%)	2024 (%)	5-year P/E Quantile	5-year P/B Quantile
Oil & Gas Equipment & Services	39.64	7.20	66.7	99.0
Wind Power	25.01	45.65	99.6	74.5
Coal Mining	23.71	-6.30	99.7	88.6
Precious Metals	22.76	79.89	63.6	97.1
Electric Power Transmission & Distribut	20.57	33.64	98.6	97.4
Chemical Raw Materials	19.92	18.81	96.8	74.7
Fiberglass	19.40	58.66	98.3	71.5
Non-Metallic Materials	17.19	26.76	87.3	47.1
Marine Ports	16.45	5.08	88.8	78.9
Solar Power	15.82	31.20	82.5	49.7
Rare Metals	15.49	96.19	88.3	86.7
Miscellaneous	14.68	43.56	95.6	98.4
Professional Engineering	14.15	13.63	97.4	59.3
Electronic Chemicals	12.45	49.71	96.6	87.3
Fertilizers & Agricultural Chemicals	12.45	40.98	91.6	66.3

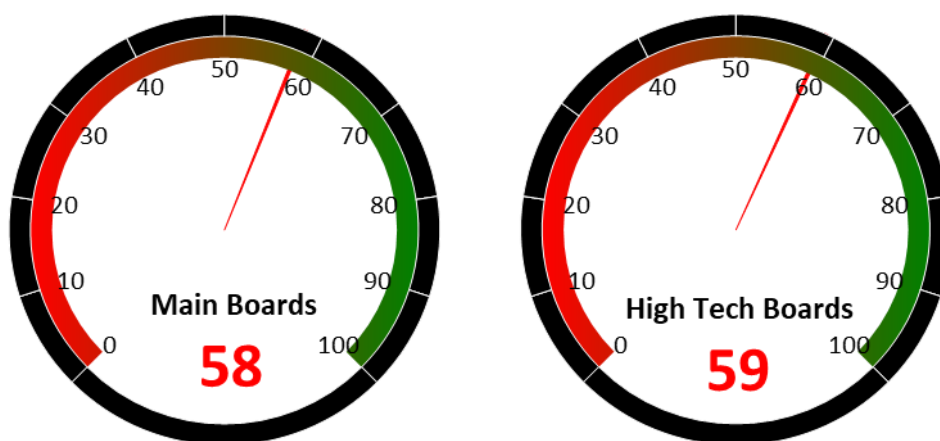
Industry	YTD (%)	2024 (%)	5-year P/E Quantile	5-year P/B Quantile
Education	-7.99	6.69	44.0	70.3
Dairy Beverages	-8.22	1.01	46.3	30.0
Motorcycle & Others	-8.37	42.62	16.3	75.8
Weapons & Ammunition	-8.55	67.51	83.1	85.9
Snack Food Packaging	-8.99	7.57	53.7	8.4
Chain Stores	-9.12	-13.59	90.5	64.5
Movies & Entertainment	-9.27	16.13	28.9	76.6
Consumer Electronics	-9.67	48.87	83.4	71.3
Appliance Parts	-9.81	88.96	76.9	61.8
Insurances	-10.86	26.42	8.6	75.5
Brokerages	-11.07	2.59	5.1	38.0
Small Household Appliances	-12.31	8.85	34.3	2.7
General Retail	-13.14	3.03	92.6	83.3
Electric Machinery	-14.54	70.78	84.9	74.1
Airports	-21.16	11.73	23.7	24.1

Source: Banyan Partners



## 2 Market Sentiment Dashboard

Our Market Sentiment Dashboard tracks the "Main Boards" and the "High Tech Boards". For the Shanghai Stock Exchange and the Shenzhen Stock Exchange there is a separate "Main Board" and "High Tech Board". Our "Main Boards" consist of the Shanghai and Shenzhen main boards. Our "High Tech Boards" consist of the Shanghai "STAR Market" and the Shenzhen "ChiNext Market". We measure the sentiment of the respective boards based on the performance of individual stocks and their industries. A score between 0 and 40 indicates bearish market sentiment, between 40 and 60 indicates neutral sentiment, and between 60 and 100 indicates bullish sentiment.



Source: Banyan Partners

## 3 Unusual Volume Change

Last Friday, Mar 20, 2026, there were 57 stocks with an unusually high change in volume. These 57 stocks were spread across 24 sectors, 12 in Electric Utilities, 5 in Environmental Governance, 5 in Wind Power, 4 in Fertilizers & Agricultural Chemicals.

Top 20 Stocks with unusual volume change in multiples

Ticker	Name	Industry	Volume Change (x)
600726.sh	华电能源	Electric Utilities	7.8
603387.sh	基蛋生物	Medical Devices	7.6
300961.sz	深水海纳	Environmental Governance	7.3
601330.sh	绿色动力	Environmental Governance	7.1
300981.sz	中红医疗	Medical Devices	6.7
000537.sz	绿发动力	Electric Utilities	6.1
002445.sz	中南文化	Industrial Machinery	6.0
600032.sh	浙江新能	Electric Utilities	5.9
603693.sh	江苏新能	Electric Utilities	5.9
002310.sz	东方新能	Infrastructure Construction	5.8
300569.sz	天能重工	Wind Power	5.7
600691.sh	潞化科技	Fertilizers & Agricultural Chemicals	5.6
603558.sh	健盛集团	Textile Manufacturing	5.6
300243.sz	瑞丰高材	Plastics	5.4
600930.sh	华电新能	Electric Utilities	5.4
601016.sh	节能风电	Electric Utilities	5.4
600643.sh	爱建集团	Diversified Financial Services	5.4
002382.sz	蓝帆医疗	Medical Devices	5.4
300185.sz	通裕重工	Wind Power	5.3
600396.sh	华电辽能	Electric Utilities	4.9

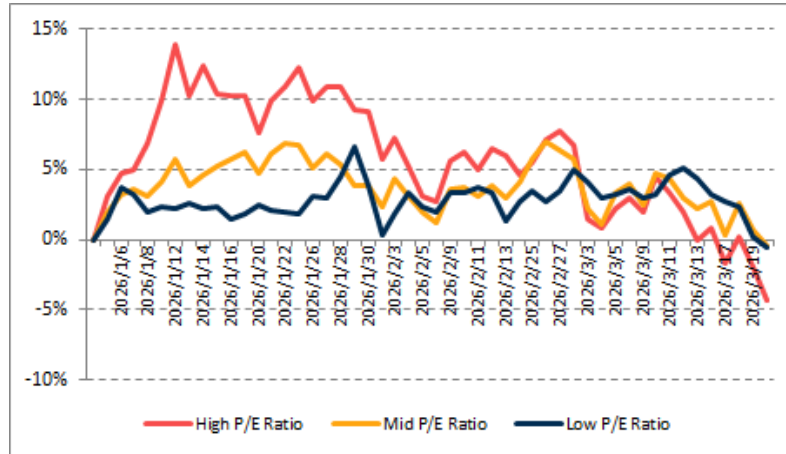
Source: Banyan Partners



## 4 Investment Style Performance

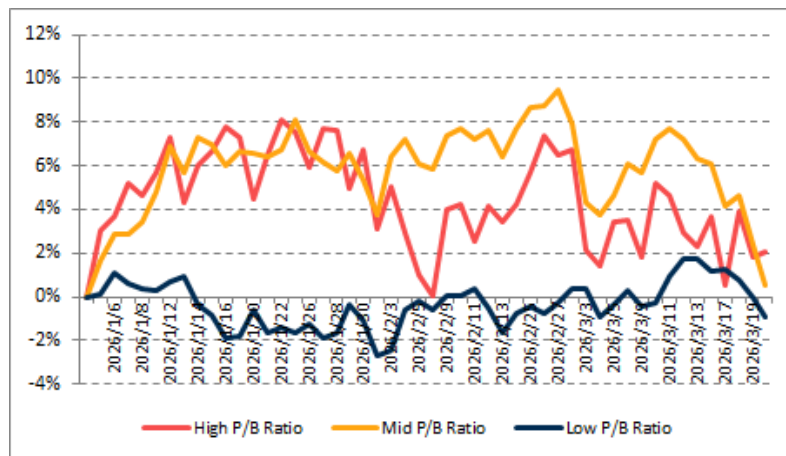
The performance of the investment style is assessed by using two metrics: P/E ratio and P/B ratio. For each metric, we categorize the data into three groups: high, mid, and low.

PE	High P/E Ratio	Mid P/E Ratio	Low P/E Ratio
YTD	-4.4%	-0.4%	-0.5%



Source: Banyan Partners

PB	High P/B Ratio	Mid P/B Ratio	Low P/B Ratio
YTD	2.1%	0.5%	-0.9%



Source: Banyan Partners

### Disclaimer

This material is provided for information purposes only and is not intended as an offer or solicitation for the purchases or sale of any financial instrument. Information has been obtained from sources believed to be reliable, but Banyan Partners or its affiliates, does not warrant as to its completeness or accuracy. Opinions and estimates constitute the judgment of Banyan Partners as of the date of this material and are subject to change without notice. Past performance is not indicative of future results. This document was last updated Mar 20 2025.

